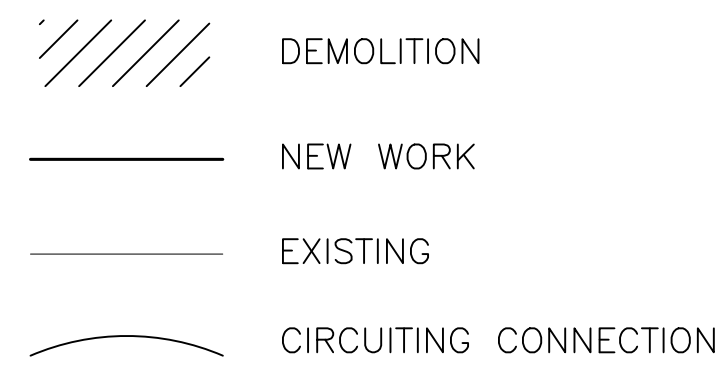


ABBREVIATIONS

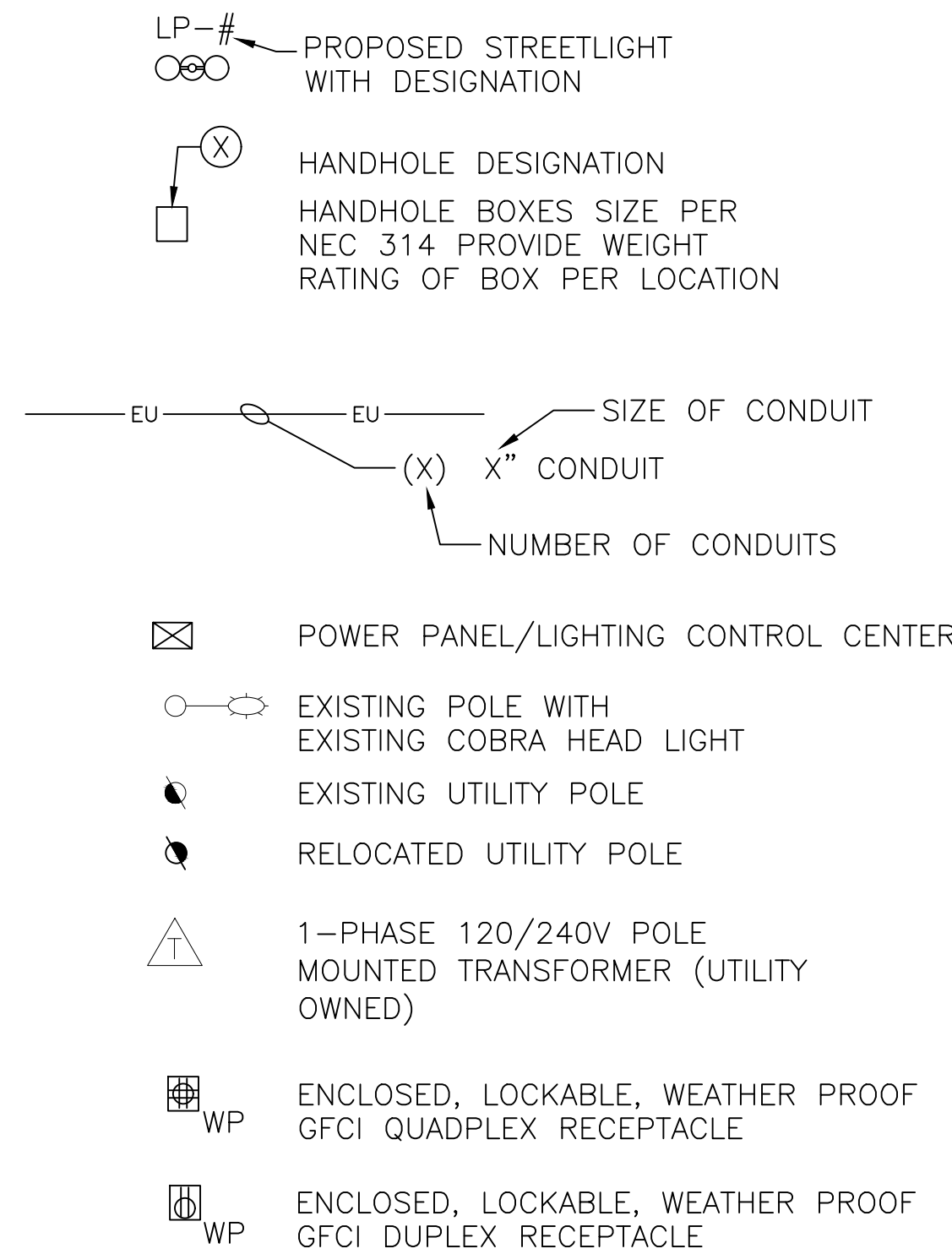
AMP./A.	AMPERE
AC.	ALTERNATING CURRENT
A/C.	AIR CONDITION
A.F.F.	ABOVE FINISHED FLOOR
AFG	ABOVE FINISHED GRADE
A.I.C.	AMPERES INTERRUPTING CAPACITY
AL	ALUMINUM
ARCH.	ARCHITECTURAL
A.R.F.	ABOVE RAISED FLOOR
ASY.	ASYMMETRICAL
A.T.C.	AUTOMATIC TEMPERATURE CONTROL
ATS	AUTOMATIC TRANSFER SWITCH
AUX.	AUXILIARY
B.F.S.	BELOW FINISHED CEILING
BLDG.	BUILDING
BKR.	BREAKER
BMS	BUILDING MANAGEMENT SYSTEM
BSMT.	BASEMENT
.C.	CENTIGRADE DEGREES
CLG.	CEILING
CKT.	CIRCUIT
CB	CIRCUIT BREAKER
CW	CLOCKWISE
COL.	COLUMN
CONC.	CONCRETE
CCTV	CLOSED CIRCUIT TELEVISION
C.	CONDUIT
CONDR.	CONDUCTOR
CU. FT.	CUBIC FEET
CONTR.	CONTRACTOR
CU.	COPPER
CONST.	CONSTRUCTION
COAX.	COAXIAL
COORD.	COORDINATE
CONT.	CONTINUATION
CMU	CONCRETE MASONRY UNIT
CR	CRITICAL
C.T.	CURRENT TRANSFORMER
DEMO	DEMOLITION
DISC.	DISCONNECT SWITCH
DIV.	DIVISION
DN.	DOWN
EA.	EACH
E.F.	EXHAUST FAN
ELEC. CL.	ELECTRICAL CLOSET
ELEC.	ELECTRICAL
E.C.	ELECTRICAL CONTRACTOR
ELEV/EL.	ELEVATION/ELEVATOR
EMT	ELECTRICAL METALLIC TUBING
ENT.	ENTRANCE
ENCL.	ENCLOSURE
EQ	EQUIPMENT
ETR	EXISTING TO REMAIN
E.W.	EACH WAY
EQUIP.	EXTERNAL/EXTERIOR
EPO	EMERGENCY POWER OFF
F.A.	FIRE ALARM
FACP	FIRE ALARM CONTROL PANEL
.F.	FAHRENHEIT DEGREES
FC	FOOTCANDLE
FT.	FEET
F.E.	FIRE EXTINGUISHER
FDN.	FOUNDATION
FIN.	FINISH/FINISHED
FIXT.	FIXTURE
FLEX.	FLEXIBLE
FL.	FLOOR
FLA	FULL LOAD AMPERES
FLUOR.	FLUORESCENT
GA.	GAGE/GAUGE
GALV.	GALVANIZED
G.C.	GENERAL CONTRACTOR
GEN.	GENERATOR
GND.	GROUND
G.F.A.	GROUND FAULT INTERRUPTER
G.R.S.C.	GALVANIZED RIGID STEEL CONDUIT
HT.	HEIGHT
H.I.D.	HIGH INTENSITY DISCHARGE
HORIZ.	HORIZONTAL
H.O.A.	HAND OFF AUTO
HP.	HORSEPOWER
H.P.S.	HIGH PRESSURE SODIUM
HZ.	HERTZ
INC.	INCANDESCENT
IMC	INTERMEDIATE CONDUIT
ISOL.	ISOLATED
INSUL.	INSULATION/INSULATED
J	JUNCTION BOX

KHZ	KILOHERTZ
KW	KILOWATT
KWH	KILOWATT HOUR
KVA	KILOVOLT-AMPERE
KVAR	KILOVAR
KV	KILOVOLT
LAN	LOCAL AREA NETWORK
LG.	LENGTH
LF	LINEAR FEET
LT	LIGHT
LTG	LIGHTING
LRA	LOCKED ROTOR AMPERES
LS	LIFE SAFETY
LG	LONG
MCB	MAIN CIRCUIT BREAKER
MCC	MOTOR CONTROL CENTER
M.C.	MECHANICAL CONTRACTOR
M/C	MULTI-CONDUCTOR
MDS	MAIN DISTRIBUTION SWITCHBOARD
MDP	MAIN DISTRIBUTION PANEL
MANUF.	MANUFACTURER
MF	MAINTENANCE FACTOR
MAX.	MAXIMUM
MB	MAIN BREAKER
MECH.	MECHANICAL
MCM	THOUSAND CIRCULAR MILLS
MG	MOTOR GENERATOR
MTD.	MOUNTED
MIN.	MINIMUM
M.L.O.	MAIN LUGS ONLY
MTS	MANUAL TRANSFER SWITCH
N.	NEUTRAL
NC	NORMAL CLOSED
N.E.C.	NATIONAL ELECTRICAL CODE
NEMA	NATIONAL ELECTRICAL MANUFACTURERS ASSOCIATION
NIC	NOT IN CONTRACT
NO	NORMALLY OPEN
NTS	NOT TO SCALE
NO./#	NUMBER
φ	PHASE
PAWC	PENNSYLVANIA AMERICAN WATER COMPANY
P.V.C.	POLYVINYLCHLORIDE
PB	PULL BOX
PNL.	PANELBOARD
P.C.	PLUMBING CONTRACTOR
PRI.	PRIMARY
PV	PHOTOVOLTAIC
R.	RADIUS
RF	RADIO FREQUENCY
REBAR.	REINFORCING BAR
RECEPT.	RECEPTACLE
REQ'D	REQUIRED
REV.	REVISE/REVISION
REC.	RECESSED
R..SW.	REMOTE CONTROL SWITCH
RGS	RIGID GALVANIZED STEEL CONDUIT
RTU	REMOTE TERMINAL UNIT
SECT.	SECTION
SEC.	SECONDARY
SERV.	SERVICE
1/C	SINGLE CONDUCTOR
SK.	SKETCH
SPECS.	SPECIFICATIONS
SQ.	SQUARE
S.F.	SQUARE FEET
STA.	STATION
SW.	SWITCH
S.S.	STAINLESS STEEL
SW'BD	SWITCHBOARD
SYM.	SYMMETRICAL
SUSP.	SUSPENDED
SEP.	SEPARATE
SHT.	SHEET
SIG.	SIGNAL
SN	SOLID NEUTRAL
SURF.	SURFACE
THRU	THROUGH
TEL.	TELEPHONE
TRANSF./XFMR	TRANSFORMER
TYP.	TYPICAL
U.O.C.	UNLESS OTHERWISE NOTED
U.R.F.	UNDER RAISED FLOOR
VS.	VERSUS
VERT.	VERTICAL
VD	VOLTAGE DROP
V.	VOLTAGE/VOLTS
WP	WEATHERPROOF
WD.	WIDE
W/	WITH
W/O	WITHOUT
W/I	WROUGHT IRON

GENERAL



POWER & LIGHTING SYMBOLS



ELECTRICAL DEMOLITION NOTES

- WITHIN THE AREA OF WORK: REMOVE ALL OBSOLETE ELECTRICAL EQUIPMENT, LUMINAIRES, CONDUIT, CONDUCTOR, CABLING, CONTROLS, HANGERS, EQUIPMENT PADS, SUPPORTS, ETC., UNLESS OTHERWISE INDICATED TO REMAIN. DISCONNECT CIRCUIT AND CONDUCTORS FROM EQUIPMENT THAT IS TO BE REMOVED. CONDUCTORS ABANDONED OR MADE OBSOLETE BY THE NEW CONSTRUCTION SHALL BE REMOVED IN THEIR ENTIRETY BACK TO POINT OF SOURCE. CONDUIT ABANDONED OR MADE OBSOLETE BY THE NEW CONSTRUCTION SHALL BE REMOVED ON ITS ENTIRETY. IF IT CANNOT BE REMOVED; IT SHALL BE SECURELY SEALED AND CAPPED SO THAT IT IS COMPLETELY CONCEALED AT THE COMPLETION OF THE PROJECT. CONDUIT AND CONDUCTORS THAT HAVE BEEN REMOVED FROM THE EXISTING ELECTRICAL SYSTEMS, SHALL NOT BE RE-USED IN THE INSTALLATION OF THE NEW SYSTEMS.
- DEMOLITION INCLUDES, BUT IS NOT LIMITED TO, REMOVAL AND LEGAL DISPOSAL OF EQUIPMENT AND SYSTEMS REMOVED, MADE OBSOLETE AND/OR REPLACED BY NEW WORK. DEMOLITION SHALL INCLUDE BUT NOT LIMITED TO RELOCATION, REINSTALLATION, DISCONNECTIONS AND RECONNECTIONS OF ENERGIZED EQUIPMENT, SUPPORTS, REROUTING OF SERVICES, ETC., AS REQUIRED TO PERMIT NEW OR RENOVATION WORK TO PROCEED.
- THE DEMOLITION WORK INDICATED ON THE DRAWING IS INTENDED TO ASSIST THE CONTRACTOR AND PROVIDE GENERAL INFORMATION. NOT ALL DEMOLITION OR TEMPORARY CONNECTIONS REQUIRED MAY BE SHOWN. PRIOR TO SUBMITTING BID, THE CONTRACTOR SHALL VISIT AND BECOME FAMILIAR WITH THE PROJECT SITE. REVIEW ORIGINAL DRAWINGS; (IF AVAILABLE). CONTRACTOR IS RESPONSIBLE FOR DETERMINING THE FULL EXTENT OF DEMOLITION, AND INCLUDE ALL REQUIRED DEMOLITION WORK IN HIS BID, WHETHER OR NOT SPECIFICALLY SHOWN ON DRAWINGS. NO ADDITIONAL COST WILL BE GRANTED FOR DEMOLITION. LEGALLY DISPOSE OF ALL ITEMS AND MATERIALS, EXCEPT ANY ITEMS SPECIFICALLY DESIGNATED BY THE OWNER TO BE SALVAGED. REMOVE AND STORE THE DESIGNATED SALVAGED EQUIPMENT IN A LOCATION DIRECTED BY THE OWNER AT NO ADDITIONAL EXPENSE.
- WITHIN THE AREA OF WORK: WHERE PATCHING IS REQUIRED, THE CONTRACTOR SHALL PROVIDE PATCHING. WHERE THE NEW SURFACE IS TO BE FINISHED, A NEW FINISH SHALL BE PROVIDED BY THE CONTRACTOR. THE CONTRACTOR SHALL BE RESPONSIBLE FOR PATCHING AND FINISHING THE SURROUNDING SURFACE TO MATCH EXISTING.
- ALL DEMOLITION AND TEMPORARY DISCONNECTION OF ASSOCIATED ELECTRIC UTILITY SHALL BE COORDINATED WITH THE UTILITY COMPANY - PPL ELECTRIC UTILITY.

ELECTRICAL DRAWING LIST

E-001	ELECTRICAL SYMBOLS, NOTES, AND ABBREVIATIONS
E-002	ELECTRICAL PLAN OVERVIEW
ED-100	ELECTRICAL DEMOLITION PLAN 1
ED-101	ELECTRICAL DEMOLITION PLAN 2
ED-102	ELECTRICAL DEMOLITION PLAN 3
E-100	ELECTRICAL NEW WORK PLAN 1
E-101	ELECTRICAL NEW WORK PLAN 2
E-102	ELECTRICAL NEW WORK PLAN 3
E-500	ELECTRICAL DETAILS 1
E-501	ELECTRICAL DETAILS 2
E-502	LIGHTING DETAIL
E-600	ONE-LINE DIAGRAM & PANELBOARD SCHEDULE

GENERAL NOTES

- ALL WORK SHALL COMPLY WITH THE LATEST VERSION OF N.E.C. AND ALL STATE AND LOCAL CODES.
- ALL WORK SHALL COMPLY WITH PENNDOT STANDARDS INCLUDING PUB 408 AND PUB 72 DRAWINGS RC-80 THROUGH 84 STANDARD LIGHTING DRAWINGS.
- THE CONTRACTOR SHALL FIELD VERIFY ALL EXISTING CONDITIONS PRIOR TO COMMENCING WORK AND SHALL COORDINATE ALL INSTALLATIONS WITH EXISTING SITE CONDITIONS, INCLUDING BUT NOT LIMITED TO EXISTING AND PROPOSED UNDERGROUND UTILITIES, STRUCTURES, FOUNDATIONS, AND IMPROVEMENTS.
- THE CONTRACTOR SHALL BE RESPONSIBLE FOR LOCATING, IDENTIFYING, AND PROTECTING ALL EXISTING UTILITIES, WHETHER SHOWN OR NOT SHOWN ON THE CONTRACT DOCUMENTS. THE CONTRACTOR SHALL COMPLY WITH ALL APPLICABLE UTILITY LOCATE REQUIREMENTS, INCLUDING THE PENNSYLVANIA ONE CALL SYSTEM, AND SHALL COORDINATE WITH ALL UTILITY OWNERS PRIOR TO ANY EXCAVATION OR GROUND DISTURBANCE.
- ANY CONFLICTS, DISCREPANCIES, OR FIELD CONDITIONS THAT REQUIRE MODIFICATION TO THE WORK SHALL BE IDENTIFIED AND RESOLVED BY THE CONTRACTOR AT NO ADDITIONAL COST TO THE CITY. ALL NECESSARY ADJUSTMENTS, RELOCATIONS, OR REWORK REQUIRED TO ACCOMMODATE EXISTING CONDITIONS SHALL BE THE RESPONSIBILITY OF THE CONTRACTOR AND SHALL BE PERFORMED IN ACCORDANCE WITH APPLICABLE CODES AND CITY REQUIREMENTS.
- THE CONTRACTOR SHALL BE RESPONSIBLE FOR PREVENTING DAMAGE TO EXISTING UTILITIES AND SERVICES. ANY DAMAGE OR INTERRUPTION CAUSED BY THE CONTRACTOR'S OPERATIONS SHALL BE IMMEDIATELY REPORTED TO THE CITY AND AFFECTED UTILITY OWNER AND SHALL BE REPAIRED OR RESTORED PROMPTLY TO THE SATISFACTION OF THE CITY AND UTILITY OWNER AT THE CONTRACTOR'S EXPENSE.
- ALL ELECTRICAL EQUIPMENT SHALL BE INSTALLED WITHIN THE RIGHT OF WAY.
- SCHEDULE THE WORK TO CONFIRM TO THE PROGRESS OF OTHER TRADES. COORDINATE ALL INSTALLATIONS AS REQUIRED.
- CONTRACTOR SHALL COORDINATE NEW ELECTRICAL WORK AND POWER SOURCE LOCATIONS WITH PPL ELECTRIC UTILITIES.
- THE TOTAL DEGREES OF BENDS IN A CONDUIT RUN SHALL NOT EXCEED 360 DEGREES BETWEEN PULL POINTS. CONTRACTOR TO INSTALL ADDITIONAL PULLBOXES AS REQUIRED. REFER TO NEC ARTICLE 352.24.
- NO LIVE ELECTRICAL WORK IS PERMITTED. ALL ELECTRICAL SHUT DOWNS FOR CONNECTIONS MUST BE COORDINATED WITH PPL ELECTRIC UTILITY AS REQUIRED.
- NOT ALL SYMBOLS AND ABBREVIATIONS ARE USED.
- ALL ELECTRICAL WORK SHALL BE IN ACCORDANCE WITH THE LATEST EDITION OF THE NATIONAL ELECTRIC CODE AND ALL STATE AND LOCAL CODES AS ENFORCED BY THE LOCAL AUTHORITY HAVING JURISDICTION.
- CONTRACTOR SHALL COORDINATE ALL ASSOCIATED UTILITY INSTALLATIONS WITH OWNER AND UTILITY. PROVIDE ALL ELEMENTS REQUIRED FOR A COMPLETE INSTALLATION PER LOCAL UTILITY REQUIREMENTS AND AUTHORITY HAVING JURISDICTION.
- ALL EXTERIOR INSTALLED EQUIPMENT SHALL HAVE ENCLOSURES WITH A MINIMUM OF A NEMA 3R RATING.
- WHERE APPLICABLE INSTALL UL APPROVED SEALING FITTINGS THAT PREVENT PASSAGE OF EXPLOSIVE VAPORS IN HAZARDOUS AREAS AS REQUIRED BY THE NEC.
- IN ALL AREAS WHERE PATCHING IS REQUIRED, THE CONTRACTOR SHALL PATCH THE SUBSURFACE WHERE THE NEW SURFACE IS TO BE FINISHED. A NEW FINISH WILL BE PROVIDED BY THE CONTRACTOR AND THE CONTRACTOR IS RESPONSIBLE TO PATCH THE SURROUNDING SURFACE TO MATCH EXISTING.

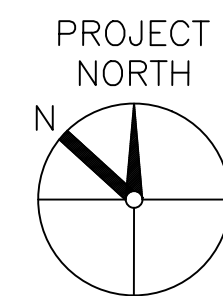
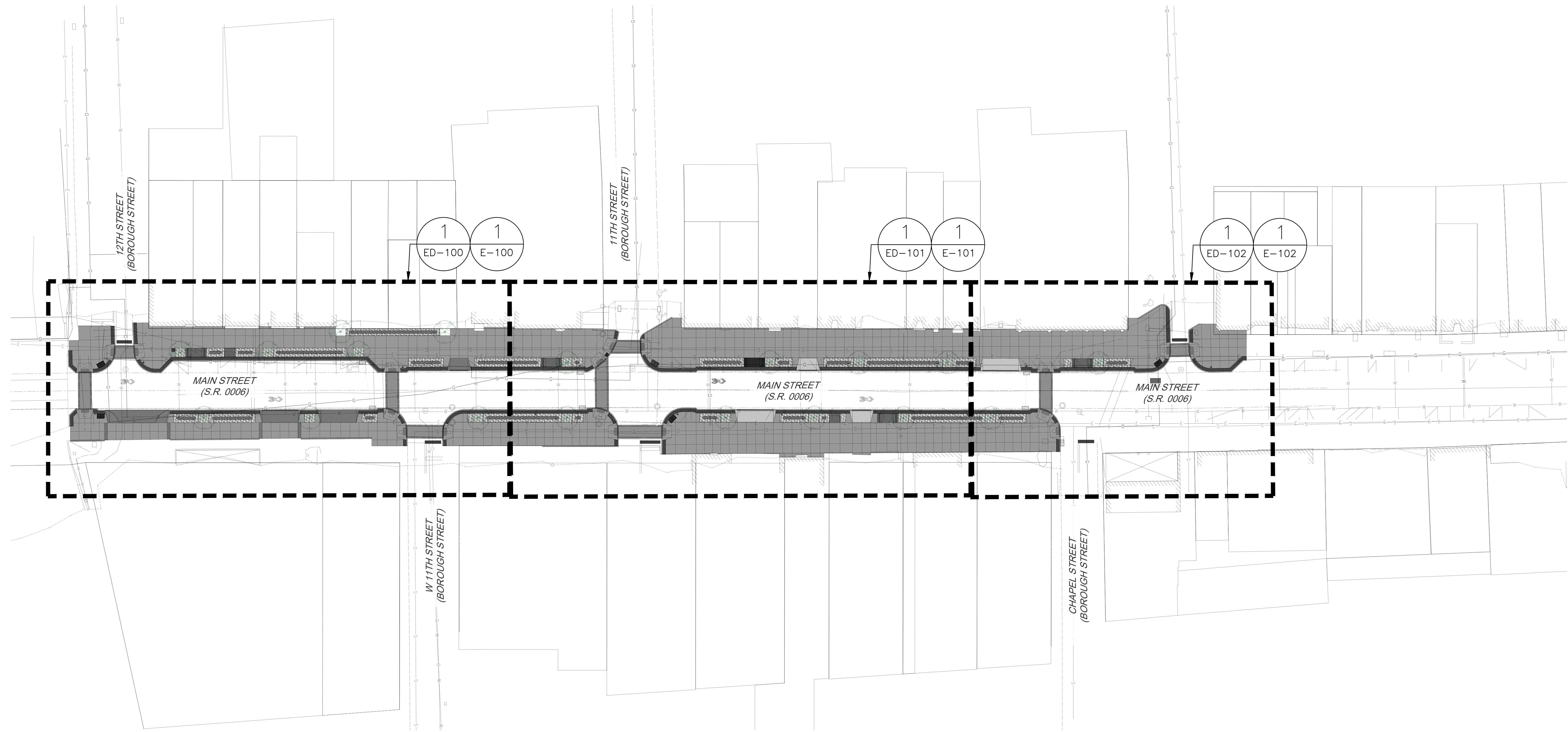


CALL BEFORE YOU DIG!
 PA LAW REQUIRES 3 WORKING DAYS
 NOTICE FOR CONSTRUCTION PHASE
 BEFORE YOU DIG - DRILL-BLAST,
 CALL PA ONE CALL SYSTEM INC.
 AT 1-800-242-1776
SERIAL NO:
SEE COVER SHEET

NOT FOR CONSTRUCTION

DISTRICT	COUNTY	BOROUGH	ROUTE	SECTION	SHEET
4-0	WAYNE	HONESDALE	0006	673	2 OF 34
REVISION NUMBER	REVISIONS				DATE BY

ECMS No. 121535



1
E-002

ELECTRICAL PLAN OVERVIEW

SCALE: 1"=10'

THE LIMIT OF PROFESSIONAL LIABILITY FOR THIS PROJECT SHALL BE LIMITED TO AN AMOUNT EQUAL TO THE FEE PAID FOR ALL WORK PERFORMED BY WOODLAND DESIGN ASSOCIATES, INC.
© 2025 WOODLAND DESIGN ASSOCIATES, INC.
ALL RIGHTS RESERVED, INCLUDING REPRODUCTION AND USE

NOT FOR CONSTRUCTION



CALL BEFORE YOU DIG!
PA LAW REQUIRES 3 WORKING DAYS
NOTICE FOR CONSTRUCTION PHASE
BEFORE YOU DIG - DRILL - BLAST.
CALL PA ONE CALL SYSTEM INC.
AT 1-800-242-1776
SERIAL NO:
SEE COVER SHEET

DISTRICT	COUNTY	BOROUGH	ROUTE	SECTION	SHEET	
4-0	WAYNE	HONESDALE	0006	673	2 OF 34	
REVISION NUMBER	REVISIONS				DATE	BY

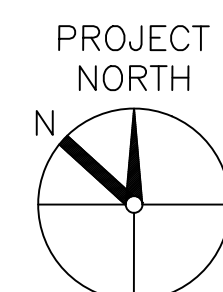
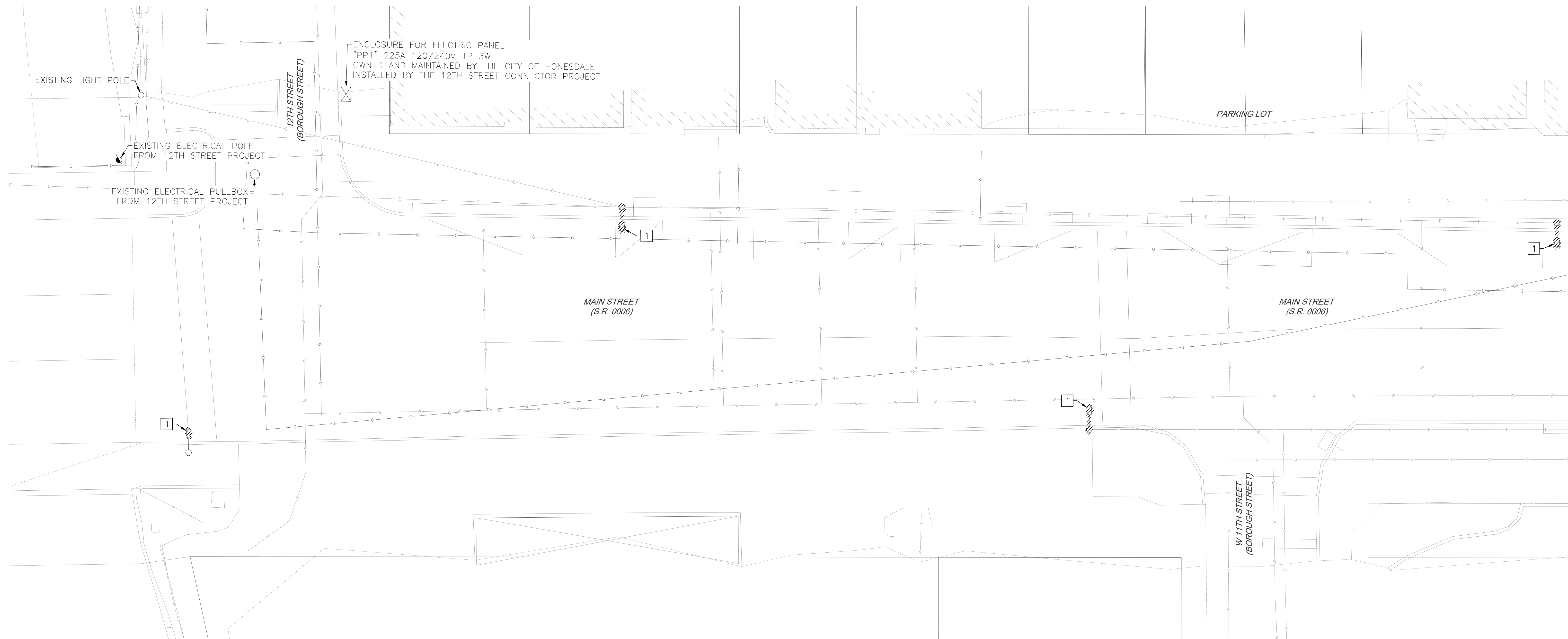
ECMS No. 121535

KEYED DEMOLITION NOTE

1 EXISTING COBRA HEAD TO BE DEMOLISHED BY PPL ELECTRIC UTILITIES.

GENERAL NOTES

1. FOR ALL EXISTING PARKING METERS WITHIN EXTENTS OF DEMOLITION (SEE CIVIL DRAWINGS), DEMOLISH ALL ASSOCIATED CONDUIT AND CONDUCTORS TO SOURCE EQUIPMENT. RETURN METERS TO OWNER.
2. FOR ALL ASSOCIATED DEMOLITION OR RELOCATION OF UTILITY EQUIPMENT, CONTRACTOR SHALL COORDINATE WITH THE BOROUGH OF HONESDALE AND PPL ELECTRIC UTILITY. CONTRACTOR SHALL ENSURE A COMPLETE AND OPERATIONAL SYSTEM AT THE COMPLETION OF CONSTRUCTION.



1
ED-100

ELECTRICAL DEMOLITION PLAN 1

SCALE: 1" = 10'

THE LIMIT OF PROFESSIONAL LIABILITY FOR THIS PROJECT SHALL BE LIMITED TO AN AMOUNT EQUAL TO THE FEE PAID FOR ALL WORK PERFORMED BY WOODLAND DESIGN ASSOCIATES, INC.
© 2025 WOODLAND DESIGN ASSOCIATES INC
ALL RIGHTS RESERVED, INCLUDING REPRODUCTION AND USE

NOT FOR CONSTRUCTION



CALL BEFORE YOU DIG!
PA LAW REQUIRES 3 WORKING DAYS NOTICE FOR CONSTRUCTION PHASE BEFORE YOU DIG - DRILL - BLAST. CALL PA ONE CALL SYSTEM INC. AT 1-800-242-1776
SERIAL NO:
SEE COVER SHEET

KEYED DEMOLITION NOTE

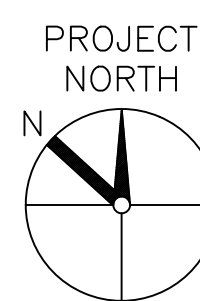
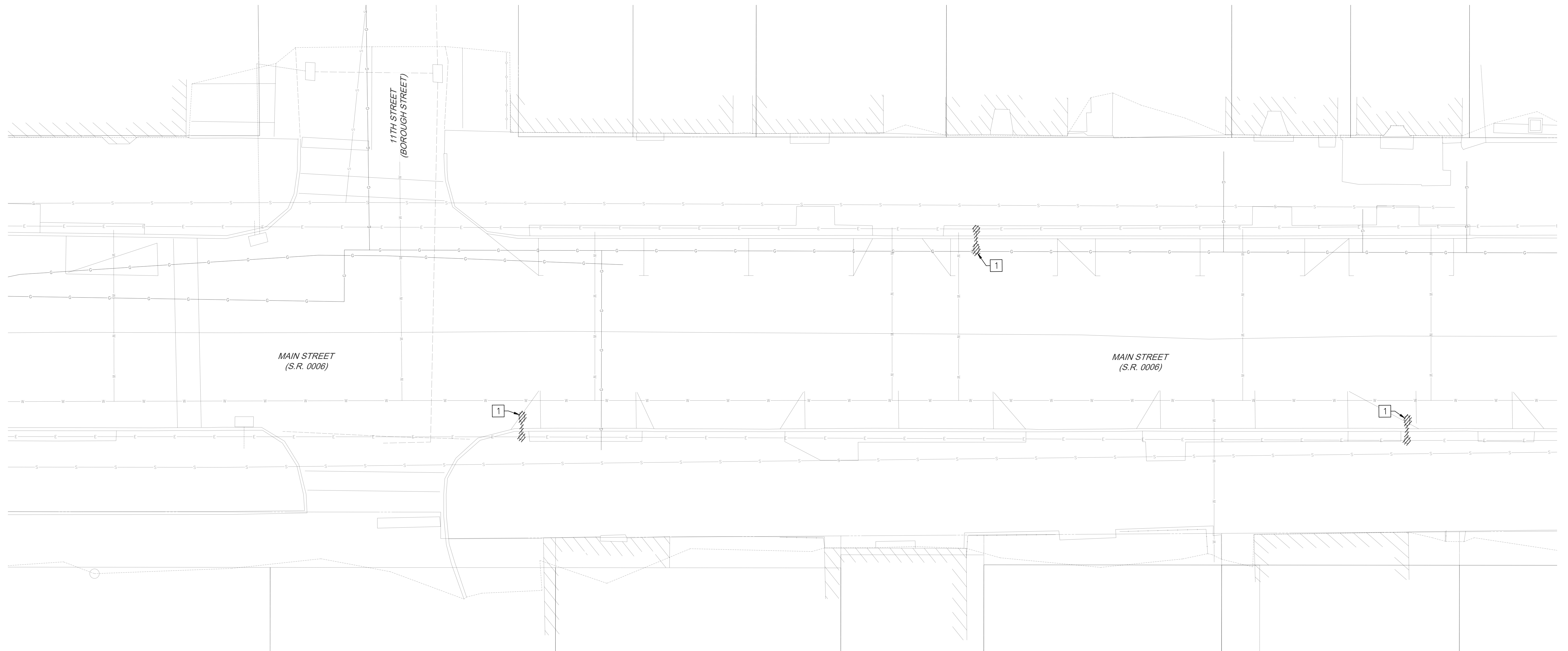
1 EXISTING COBRA HEAD TO BE DEMOLISHED BY PPL ELECTRIC UTILITIES.

GENERAL NOTES

1. FOR ALL EXISTING PARKING METERS WITHIN EXTENTS OF DEMOLITION (SEE CIVIL DRAWINGS), DEMOLISH ALL ASSOCIATED CONDUIT AND CONDUCTORS TO SOURCE EQUIPMENT. RETURN METERS TO OWNER.
2. FOR ALL ASSOCIATED DEMOLITION OR RELOCATION OF UTILITY EQUIPMENT, CONTRACTOR SHALL COORDINATE WITH THE BOROUGH OF HONSDALE AND PPL ELECTRIC UTILITY. CONTRACTOR SHALL ENSURE A COMPLETE AND OPERATIONAL SYSTEM AT THE COMPLETION OF CONSTRUCTION.

DISTRICT	COUNTY	BOROUGH	ROUTE	SECTION	SHEET	
4-0	WAYNE	HONSDALE	0006	673	2 OF 34	
REVISION NUMBER	REVISIONS				DATE	BY

ECMS No. 121535



1
ED-100

ELECTRICAL DEMOLITION PLAN 2

SCALE: 1"=10'

THE LIMIT OF PROFESSIONAL LIABILITY FOR THIS PROJECT SHALL BE LIMITED TO AN AMOUNT EQUAL TO THE FEE PAID FOR ALL WORK PERFORMED BY WOODLAND DESIGN ASSOCIATES, INC.
© 2026 WOODLAND DESIGN ASSOCIATES INC.
ALL RIGHTS RESERVED, INCLUDING REPRODUCTION AND USE

NOT FOR CONSTRUCTION



CALL BEFORE YOU DIG!
PA LAW REQUIRES 3 WORKING DAYS
NOTICE FOR CONSTRUCTION PHASE
BEFORE YOU DIG - DRILL - BLAST.
CALL PA ONE CALL SYSTEM INC.
AT 1-800-242-1776
SERIAL NO:
SEE COVER SHEET

DISTRICT	COUNTY	BOROUGH	ROUTE	SECTION	SHEET	
4-0	WAYNE	HONSDALE	0006	673	2 OF 34	
REVISION NUMBER	REVISIONS				DATE	BY

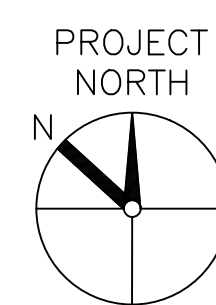
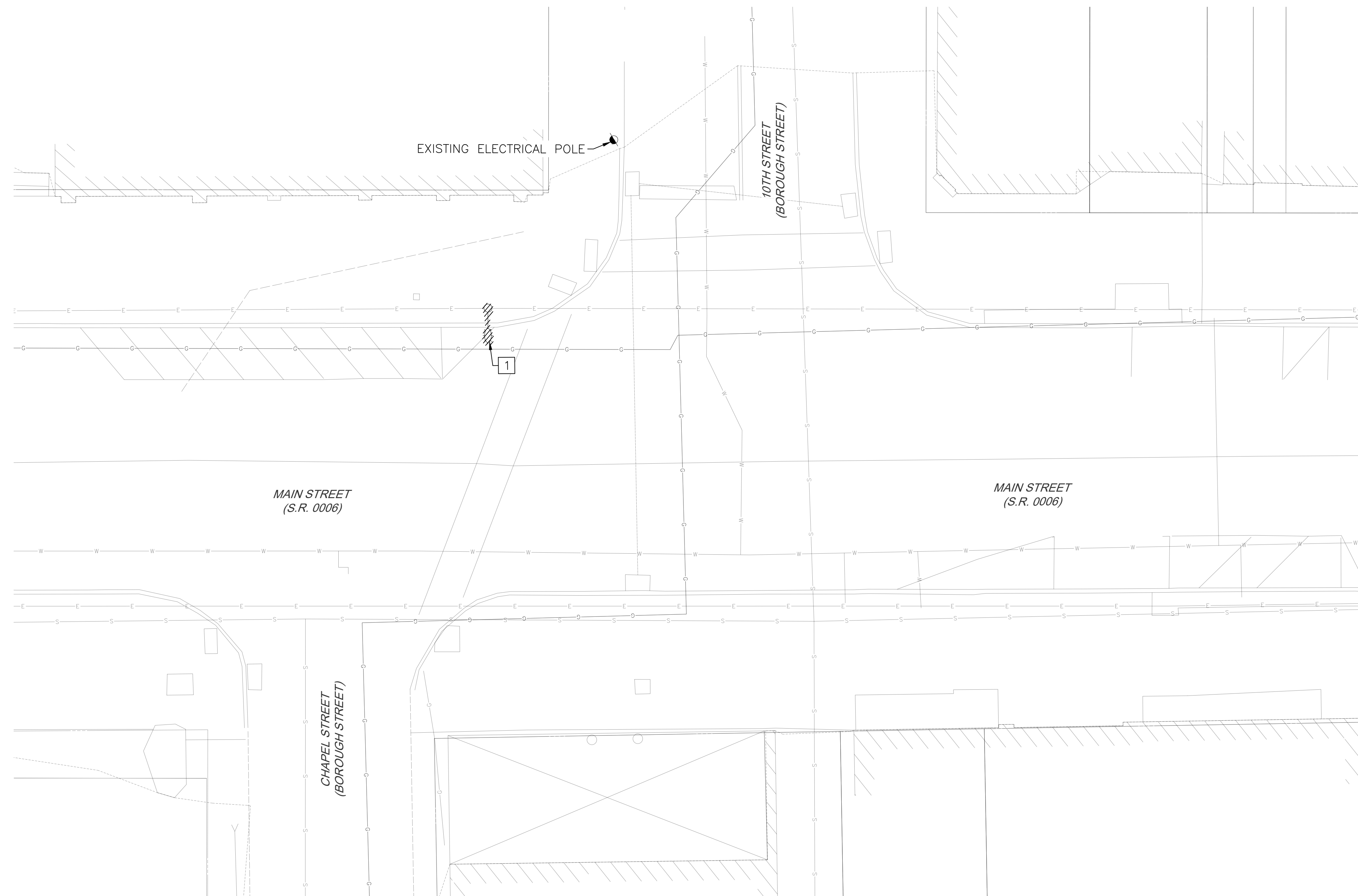
ECMS No. 121535

GENERAL NOTES

- FOR ALL EXISTING PARKING METERS WITHIN EXTENTS OF DEMOLITION (SEE CIVIL DRAWINGS), DEMOLISH ALL ASSOCIATED CONDUIT AND CONDUCTORS TO SOURCE EQUIPMENT. RETURN METERS TO OWNER.
- FOR ALL ASSOCIATED DEMOLITION OR RELOCATION OF UTILITY EQUIPMENT, CONTRACTOR SHALL COORDINATE WITH THE BOROUGH OF HONSDALE AND PPL ELECTRIC UTILITY. CONTRACTOR SHALL ENSURE A COMPLETE AND OPERATIONAL SYSTEM AT THE COMPLETION OF CONSTRUCTION.

KEYED DEMOLITION NOTE

- EXISTING COBRA HEAD TO BE DEMOLISHED BY PPL ELECTRIC UTILITIES.



1
ED-100

ELECTRICAL DEMOLITION PLAN 3
SCALE: 1"=10'

THE LIMIT OF PROFESSIONAL LIABILITY FOR THIS PROJECT SHALL BE LIMITED TO AN AMOUNT EQUAL TO THE FEE PAID FOR ALL WORK PERFORMED BY WOODLAND DESIGN ASSOCIATES, INC.
© 2025 WOODLAND DESIGN ASSOCIATES, INC.
ALL RIGHTS RESERVED, INCLUDING REPRODUCTION AND USE

NOT FOR CONSTRUCTION



CALL BEFORE YOU DIG!
PA LAW REQUIRES 3 WORKING DAYS NOTICE FOR CONSTRUCTION PHASE BEFORE YOU DIG - DRILL - BLAST. CALL PA ONE CALL SYSTEM INC. AT 1-800-242-1776
SERIAL NO:
SEE COVER SHEET

DISTRICT	COUNTY	BOROUGH	ROUTE	SECTION	SHEET	
4-0	WAYNE	HONESDALE	0006	673	2 OF 34	
REVISION NUMBER	REVISIONS				DATE	BY

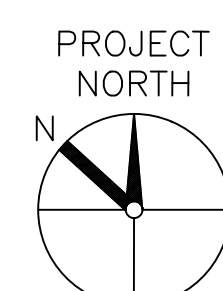
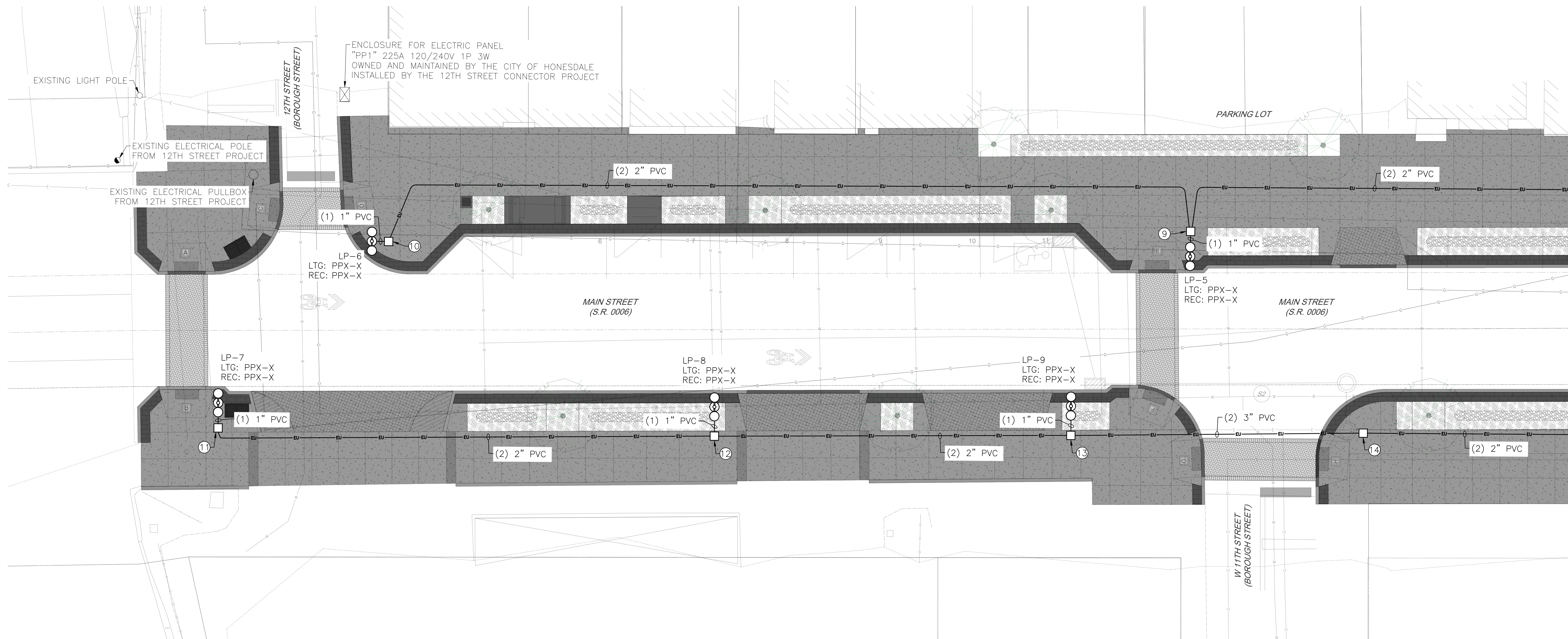
ECMS No. 121535

HANDHOLE NUMBERS

- ⑨ HH-9
- ⑩ HH-10
- ⑪ HH-11
- ⑫ HH-12
- ⑬ HH-13
- ⑭ HH-14

GENERAL NOTES

1. PROVIDE HANDHOLE ENCLOSURES/JUNCTION BOXES PER NEC 314.30 (TYP)
2. ALL NEW LIGHTING TO BE CONTROLLED BY BUTTON-TYPE PHOTOCELL TO BE MOUNTED ON THE POWER PANEL/LIGHTING CONTROL CABINET.
3. STREETLIGHTS TO BE WIRED AT 120V 1-PHASE. COORDINATE POWER SUPPLY TO POWER PANEL/LIGHTING CONTROL CENTER WITH PPL ELECTRIC UTILITIES.
4. ALL GROUNDING INSTALLED BY THE CONTRACTOR SHALL BE IN ACCORDANCE TO NEC ARTICLE 250.
5. PROVIDE ALL "LP" LAMP POLES WITH (2) 120V 20 AMP GFCI WP RECEPTACLES (TYP).
6. REFER TO NEC ARTICLE 300.5 - UNDERGROUND INSTALLATIONS FOR UNDERGROUND RACEWAY REQUIREMENTS.



1
E-100

ELECTRICAL NEW WORK PLAN 1

SCALE: 1"=10'

NOT FOR CONSTRUCTION



CALL BEFORE YOU DIG!
 PA LAW REQUIRES 3 WORKING DAYS
 NOTICE FOR CONSTRUCTION PHASE
 BEFORE YOU DIG - DRILL - BLAST.
 CALL PA ONE CALL SYSTEM INC.
 AT 1-800-242-1776
 SERIAL NO:
 SEE COVER SHEET

DISTRICT	COUNTY	BOROUGH	ROUTE	SECTION	SHEET	
4-0	WAYNE	HONESDALE	0006	673	2 OF 34	
REVISION NUMBER	REVISIONS				DATE	BY

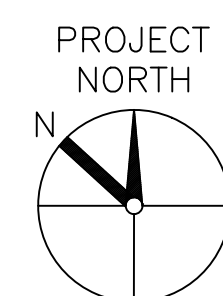
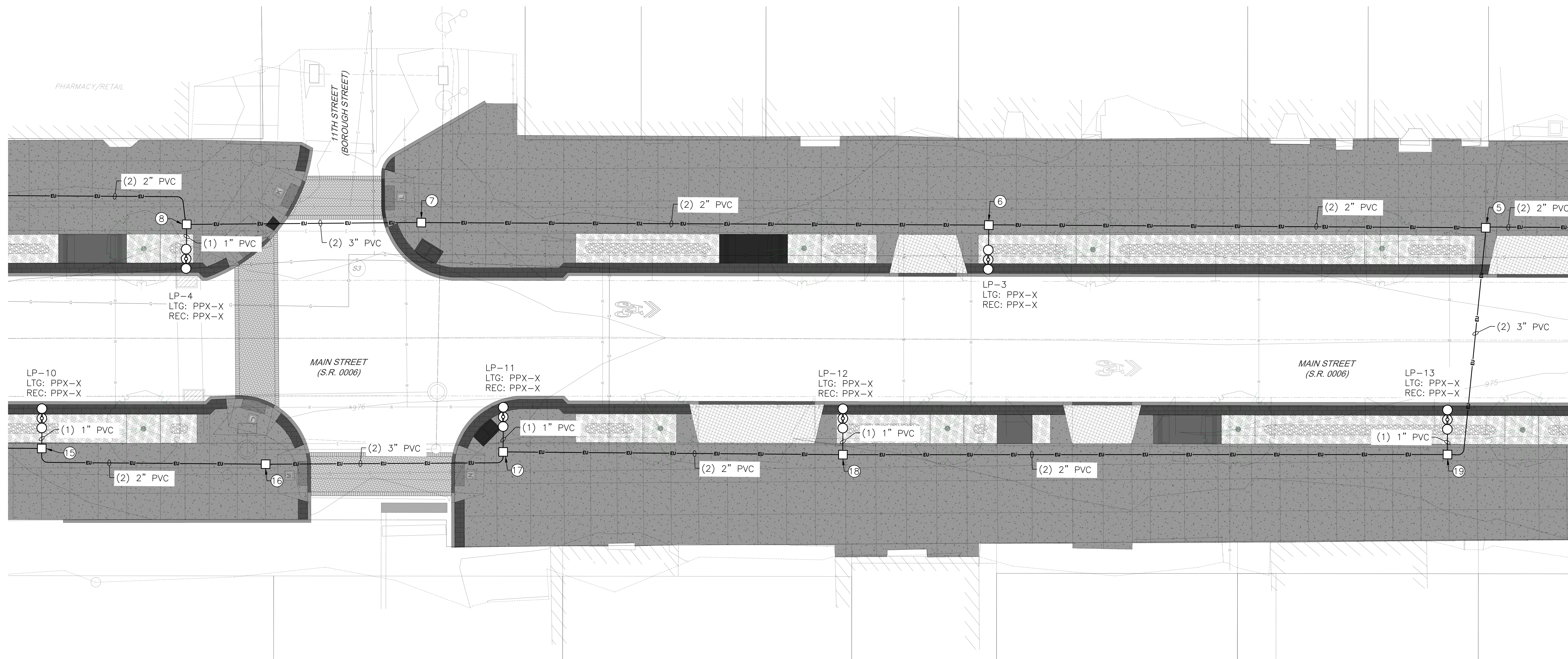
ECMS No. 121535

HANDHOLE NUMBERS

- ⑤ HH-5
- ⑥ HH-6
- ⑦ HH-7
- ⑧ HH-8
- ⑮ HH-15
- ⑯ HH-16
- ⑰ HH-17
- ⑱ HH-18
- ⑲ HH-19

GENERAL NOTES

1. PROVIDE HANDHOLE ENCLOSURES/JUNCTION BOXES PER NEC 314.30 (TYP)
2. ALL NEW LIGHTING TO BE CONTROLLED BY BUTTON-TYPE PHOTOCELL TO BE MOUNTED ON THE POWER PANEL/LIGHTING CONTROL CABINET.
3. STREETLIGHTS TO BE WIRED AT 120V 1-PHASE. COORDINATE POWER SUPPLY TO POWER PANEL/LIGHTING CONTROL CENTER WITH PPL ELECTRIC UTILITIES.
4. ALL GROUNDING INSTALLED BY THE CONTRACTOR SHALL BE IN ACCORDANCE TO NEC ARTICLE 250.
5. PROVIDE ALL "LP" LAMP POLES WITH (2) 120V 20 AMP GFCI WP RECEPTACLES (TYP).
6. REFER TO NEC ARTICLE 300.5 - UNDERGROUND INSTALLATIONS FOR UNDERGROUND RACEWAY REQUIREMENTS.



1
E-101

ELECTRICAL NEW WORK PLAN 2

SCALE: 1"=10'

NOT FOR CONSTRUCTION



CALL BEFORE YOU DIG!
PA LAW REQUIRES 3 WORKING DAYS
NOTICE FOR CONSTRUCTION PHASE
BEFORE YOU DIG - DRILL - BLAST.
CALL PA ONE CALL SYSTEM INC.
AT 1-800-242-1776
SERIAL NO:
SEE COVER SHEET

DISTRICT	COUNTY	BOROUGH	ROUTE	SECTION	SHEET	
4-0	WAYNE	HONESDALE	0006	673	2 OF 34	
REVISION NUMBER	REVISIONS				DATE	BY

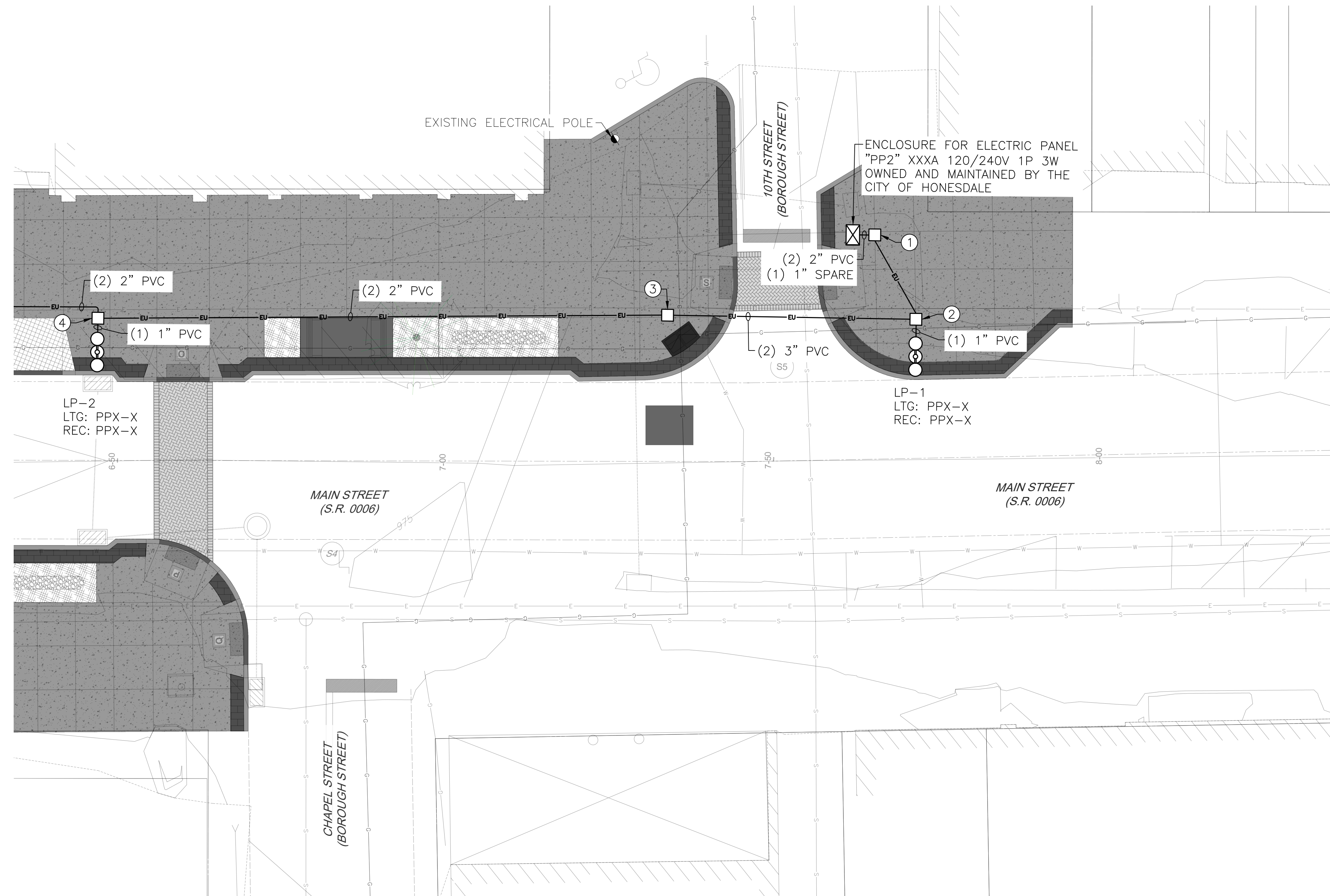
ECMS No. 121535

GENERAL NOTES

1. PROVIDE HANDHOLE ENCLOSURES/JUNCTION BOXES PER NEC 314.30 (TYP)
2. ALL NEW LIGHTING TO BE CONTROLLED BY BUTTON-TYPE PHOTOCELL TO BE MOUNTED ON THE POWER PANEL/LIGHTING CONTROL CABINET.
3. STREETLIGHTS TO BE WIRED AT 120V 1-PHASE. COORDINATE POWER SUPPLY TO POWER PANEL/LIGHTING CONTROL CENTER WITH PPL ELECTRIC UTILITIES.
4. ALL GROUNDING INSTALLED BY THE CONTRACTOR SHALL BE IN ACCORDANCE TO NEC ARTICLE 250.
5. PROVIDE ALL "LP" LAMP POLES WITH (2) 120V 20 AMP GFCI WP RECEPTACLES (TYP).
6. REFER TO NEC ARTICLE 300.5 - UNDERGROUND INSTALLATIONS FOR UNDERGROUND RACEWAY REQUIREMENTS.
7. EXACT LOCATION OF POWER PANEL 'PP2' TO BE APPROVED PRIOR TO INSTALLATION.
8. CONTRACTOR SHALL COORDINATE UTILITY METER & SERVICE INSTALLATION WITH PPL ELECTRIC UTILITY. CONTRACTOR SHALL PROVIDE ALL NECESSARY MATERIALS AND LABOR TO INSTALL THE ASSOCIATED NEW SERVICE. CONTRACTOR SHALL MEET ALL PPL UTILITY AND NEC REQUIREMENTS. PROVIDE SHOP DRAWINGS FOR REVIEW AND APPROVAL.

HANDHOLE NUMBERS

- ① HH-1
- ② HH-2
- ③ HH-3
- ④ HH-4



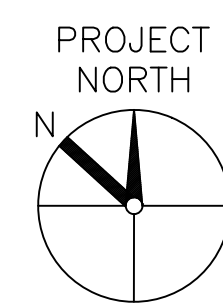
LP-2
LTG: PPX-X
REC: PPX-X

LP-1
LTG: PPX-X
REC: PPX-X

MAIN STREET
(S.R. 0006)

MAIN STREET
(S.R. 0006)

CHAPEL STREET
(BOROUGH STREET)



1
E-102

ELECTRICAL NEW WORK PLAN 3

SCALE: 1"=10'

NOT FOR CONSTRUCTION



CALL BEFORE YOU DIG!
PA LAW REQUIRES 3 WORKING DAYS
NOTICE FOR CONSTRUCTION PHASE
BEFORE YOU DIG - DRILL-BLAST.
CALL PA ONE CALL SYSTEM INC.
AT 1-800-242-1776
SERIAL NO:
SEE COVER SHEET

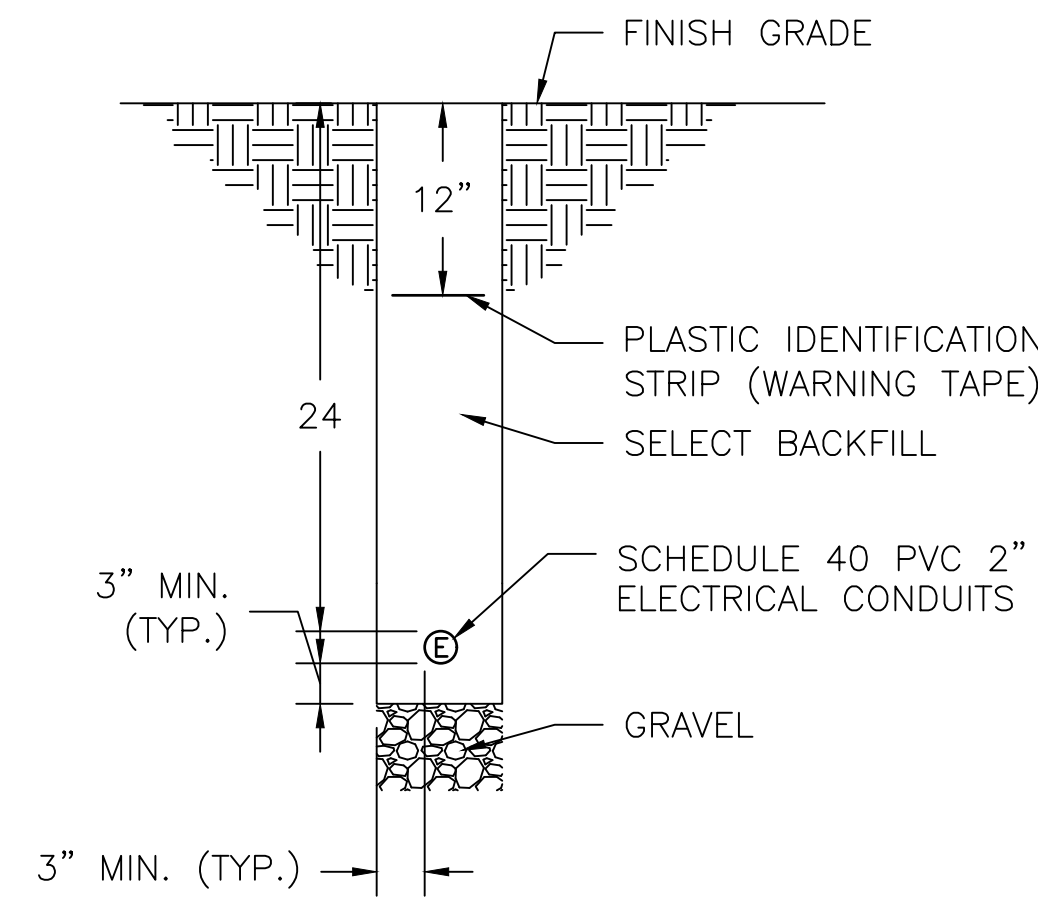
THE LIMIT OF PROFESSIONAL LIABILITY FOR THIS PROJECT SHALL BE LIMITED TO AN AMOUNT EQUAL TO THE FEE PAID FOR ALL WORK PERFORMED BY WOODLAND DESIGN ASSOCIATES, INC.
© 2025 WOODLAND DESIGN ASSOCIATES, INC.
ALL RIGHTS RESERVED, INCLUDING REPRODUCTION AND USE

SYMBOLS LIST (TYP)

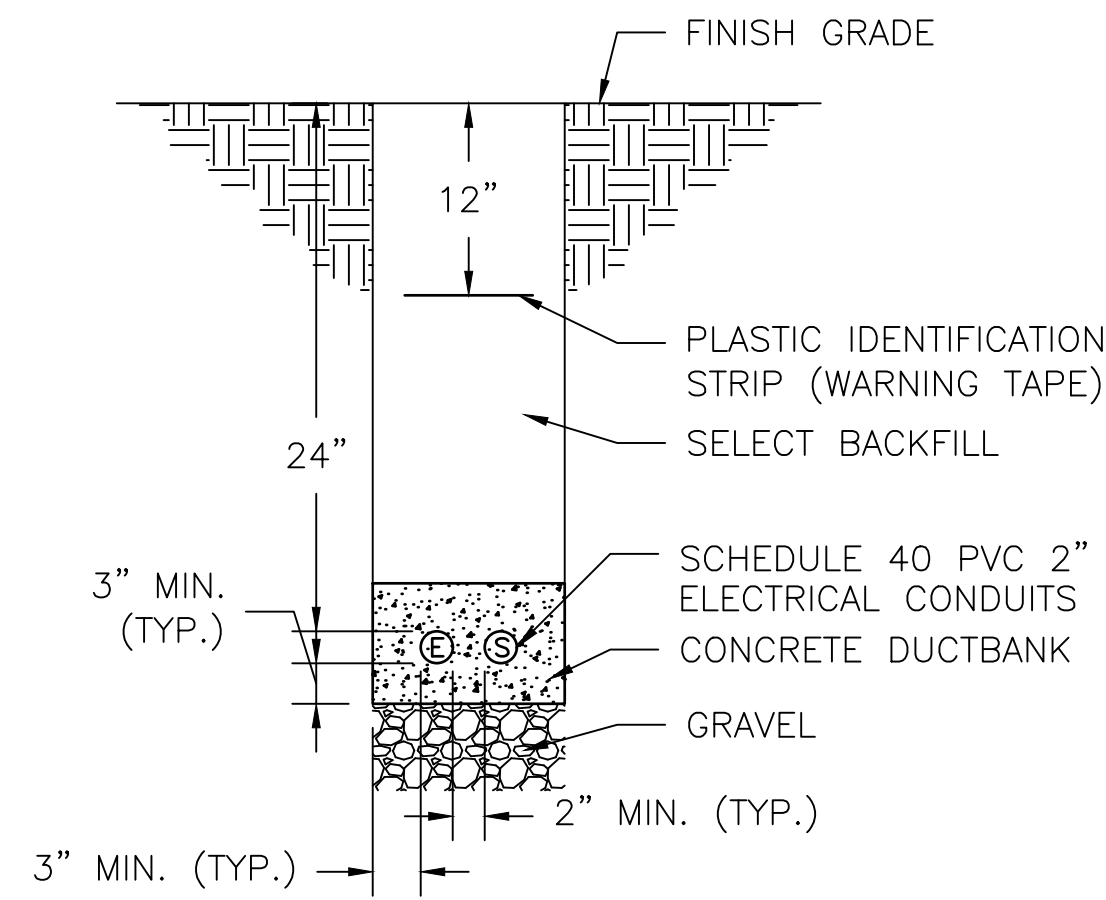
- ⓔ POWER
- Ⓢ SPARE

DISTRICT	COUNTY	BOROUGH	ROUTE	SECTION	SHEET	
4-0	WAYNE	HONESDALE	0006	673	2 OF 34	
REVISION NUMBER	REVISIONS				DATE	BY

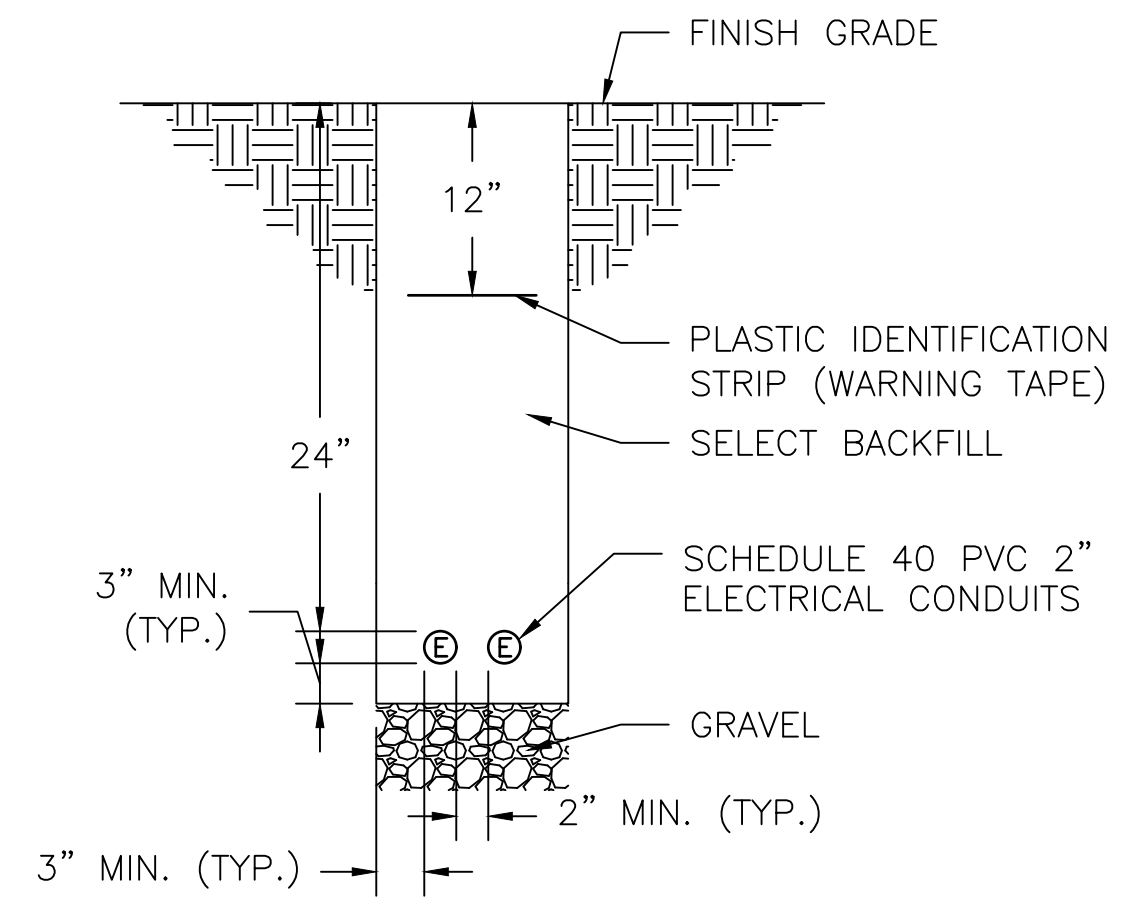
ECMS No. 121535



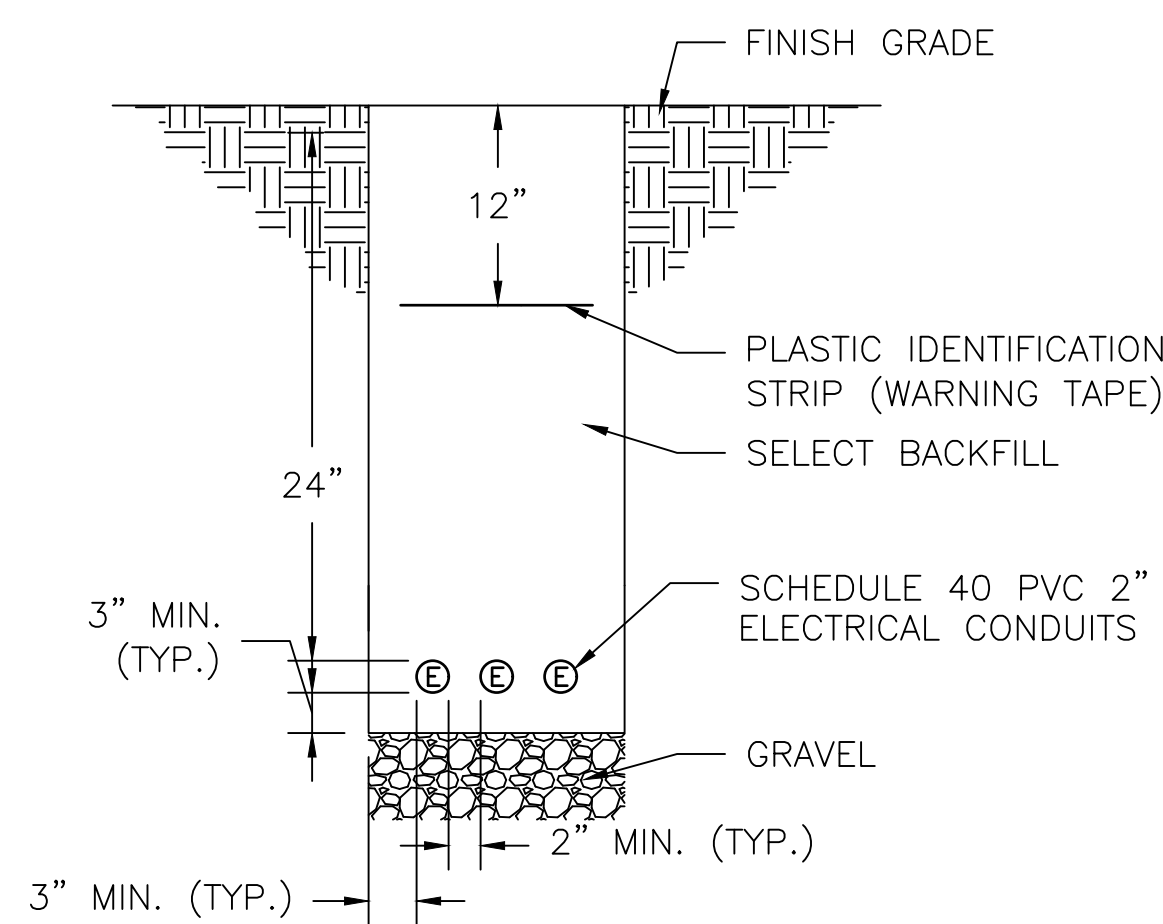
1 TYPICAL UNDERGROUND CONDUIT DETAIL (1) 2" SCALE: NOT TO SCALE
E-500



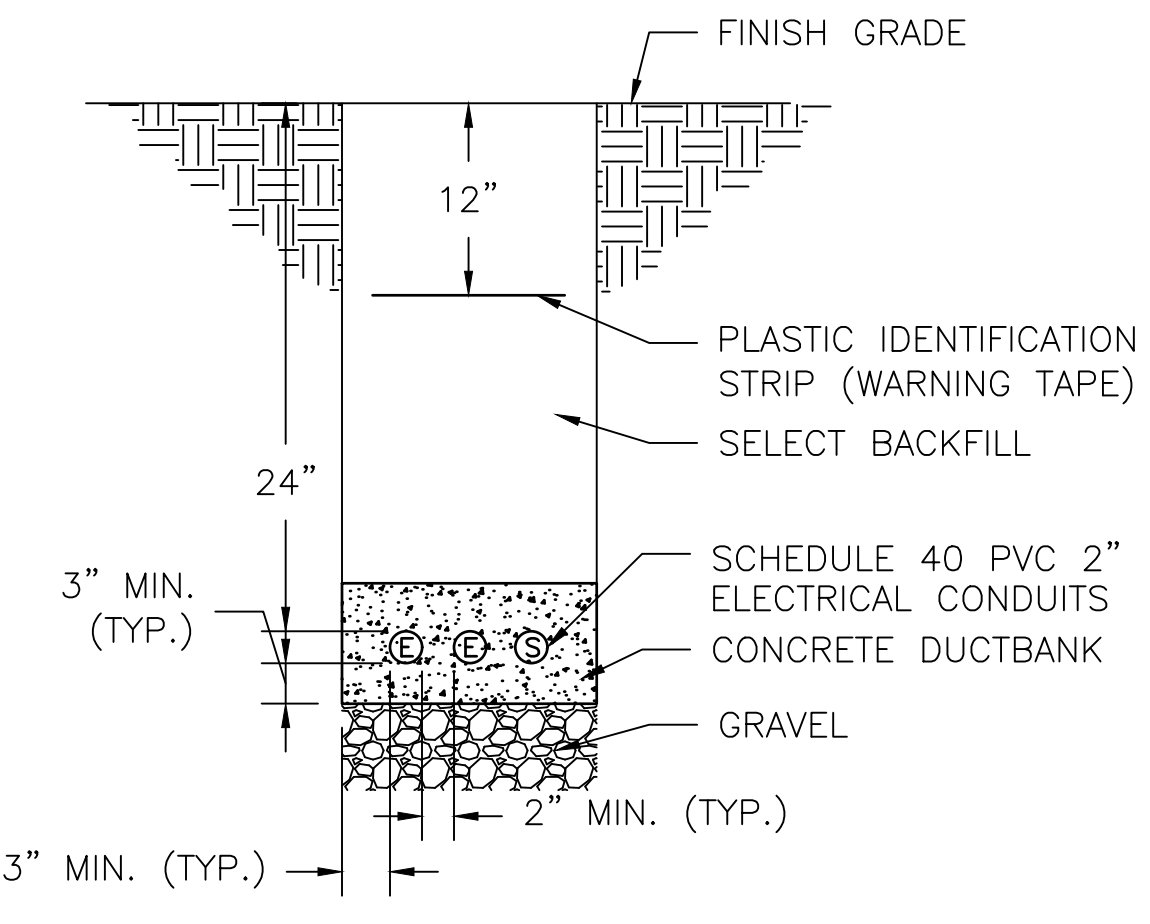
2 TYPICAL UNDERGROUND CONDUIT DETAIL (2) 2" - CONCRETE ENCASED SCALE: NOT TO SCALE
E-500



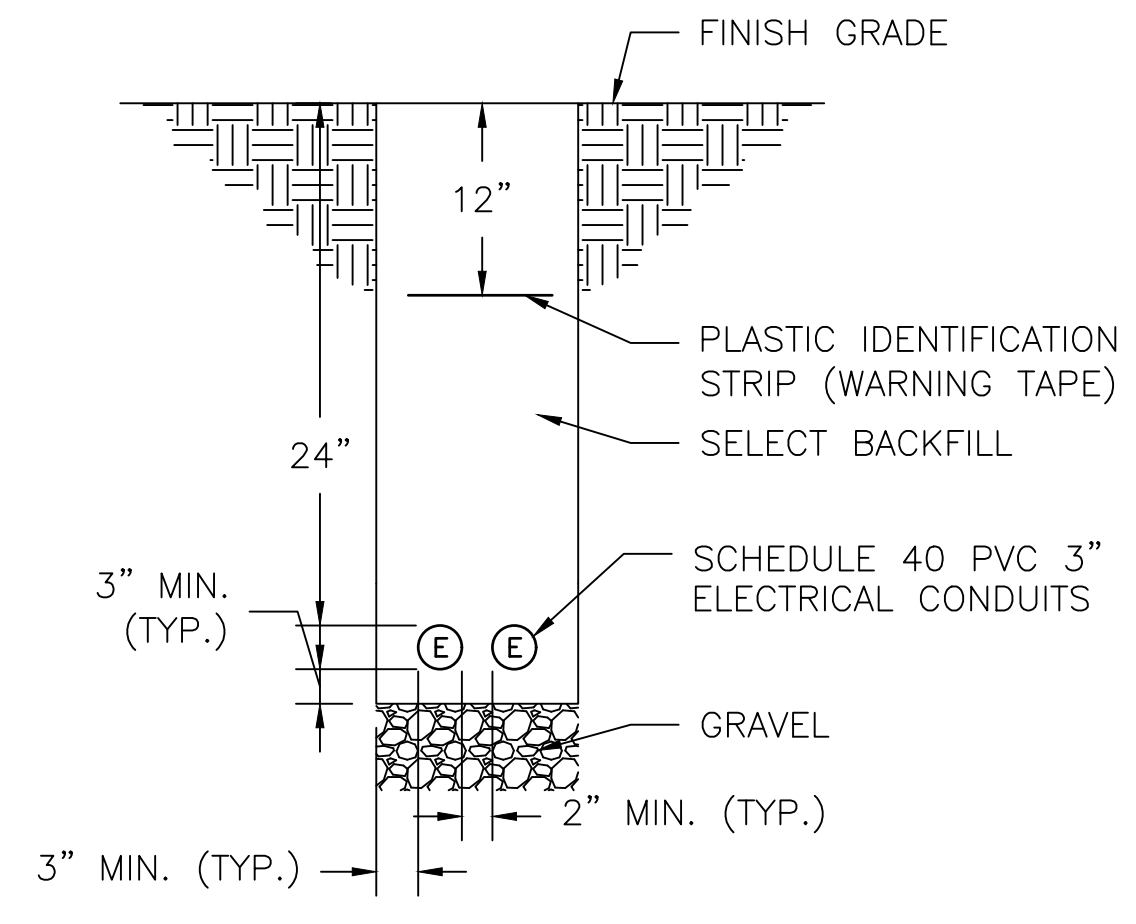
3 TYPICAL UNDERGROUND CONDUIT DETAIL (2) 2" SCALE: NOT TO SCALE
E-500



4 TYPICAL UNDERGROUND CONDUIT DETAIL (3) 2" SCALE: NOT TO SCALE
E-500



5 TYPICAL UNDERGROUND CONDUIT DETAIL (3) 2" - CONCRETE ENCASED SCALE: NOT TO SCALE
E-500



6 TYPICAL UNDERGROUND CONDUIT DETAIL (2) 3" SCALE: NOT TO SCALE
E-500

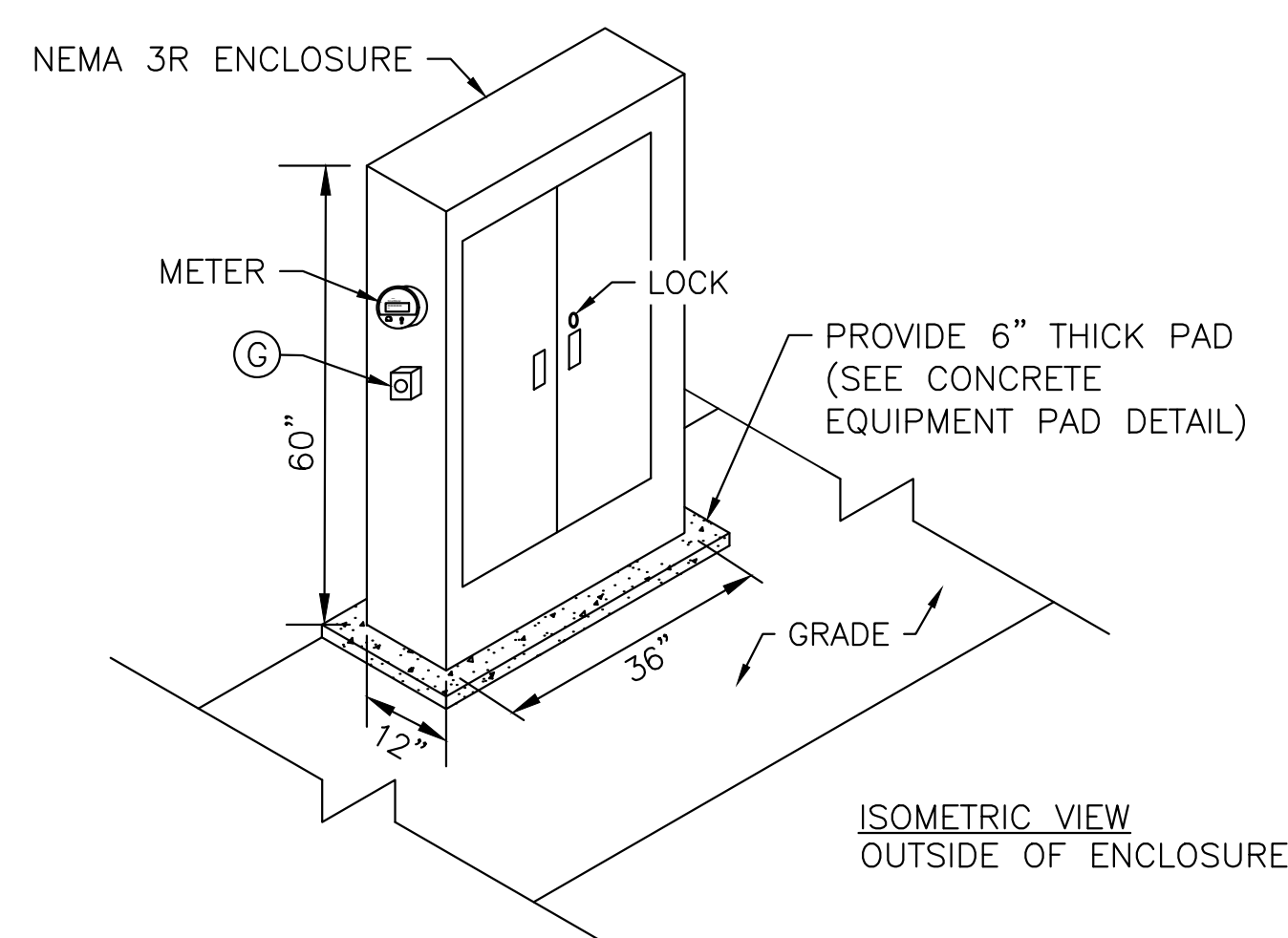
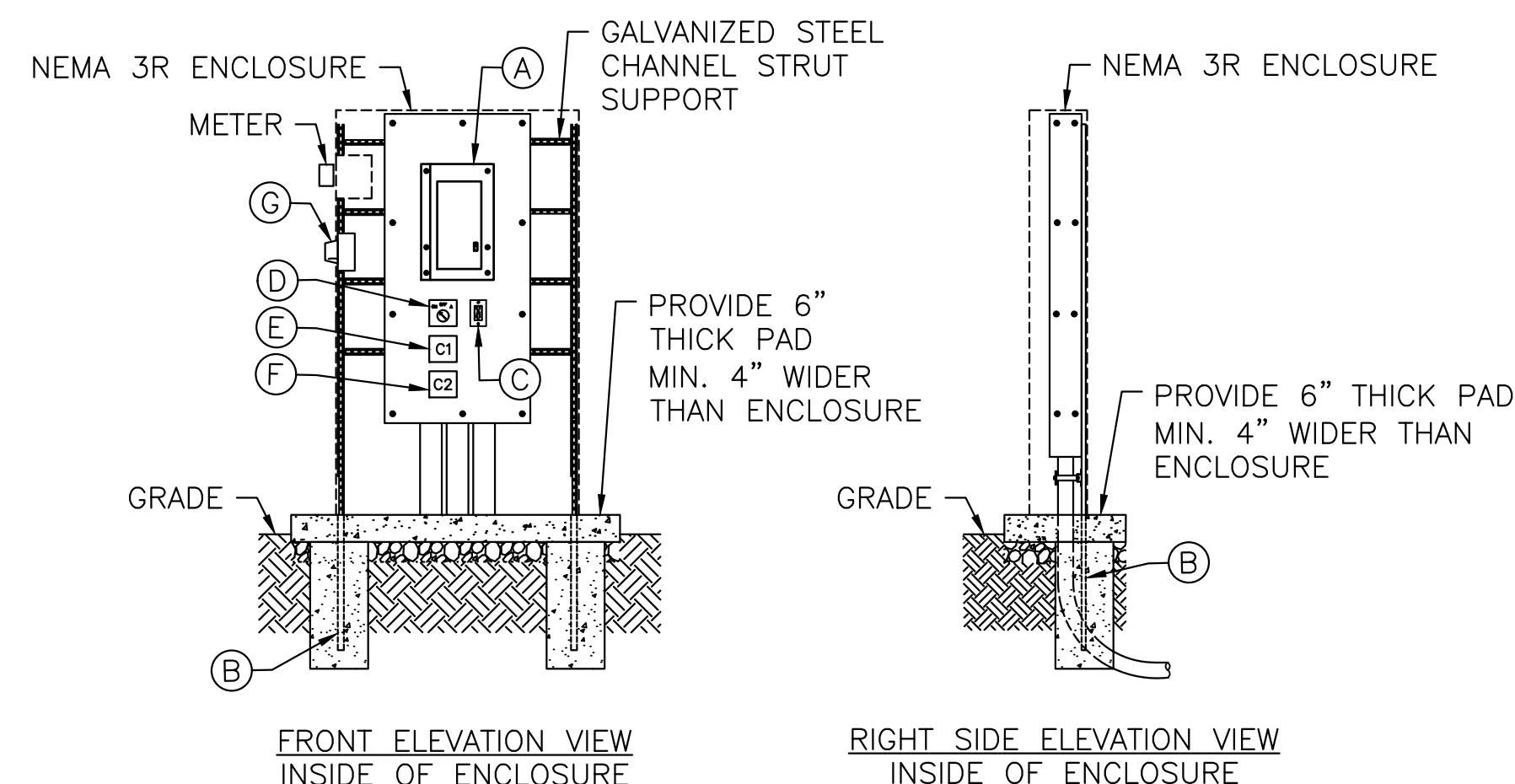
NOT FOR CONSTRUCTION



CALL BEFORE YOU DIG!
PA LAW REQUIRES 3 WORKING DAYS NOTICE FOR CONSTRUCTION PHASE BEFORE YOU DIG - DRILL - BLAST. CALL PA ONE CALL SYSTEM INC. AT 1-800-242-1776
SERIAL NO: SEE COVER SHEET

DISTRICT	COUNTY	BOROUGH	ROUTE	SECTION	SHEET	
4-0	WAYNE	HONESDALE	0006	673	2 OF 34	
REVISION NUMBER	REVISIONS				DATE	BY

ECMS No. 121535



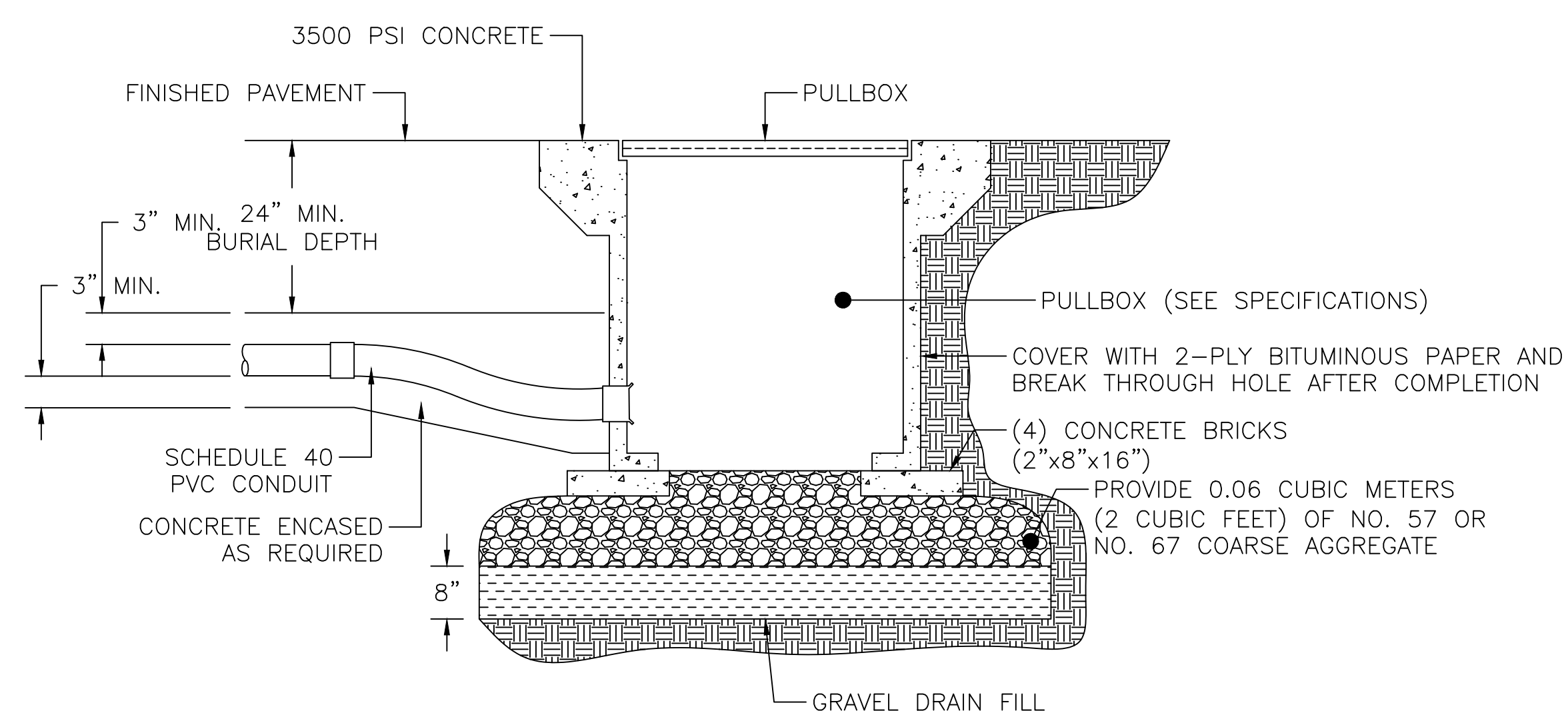
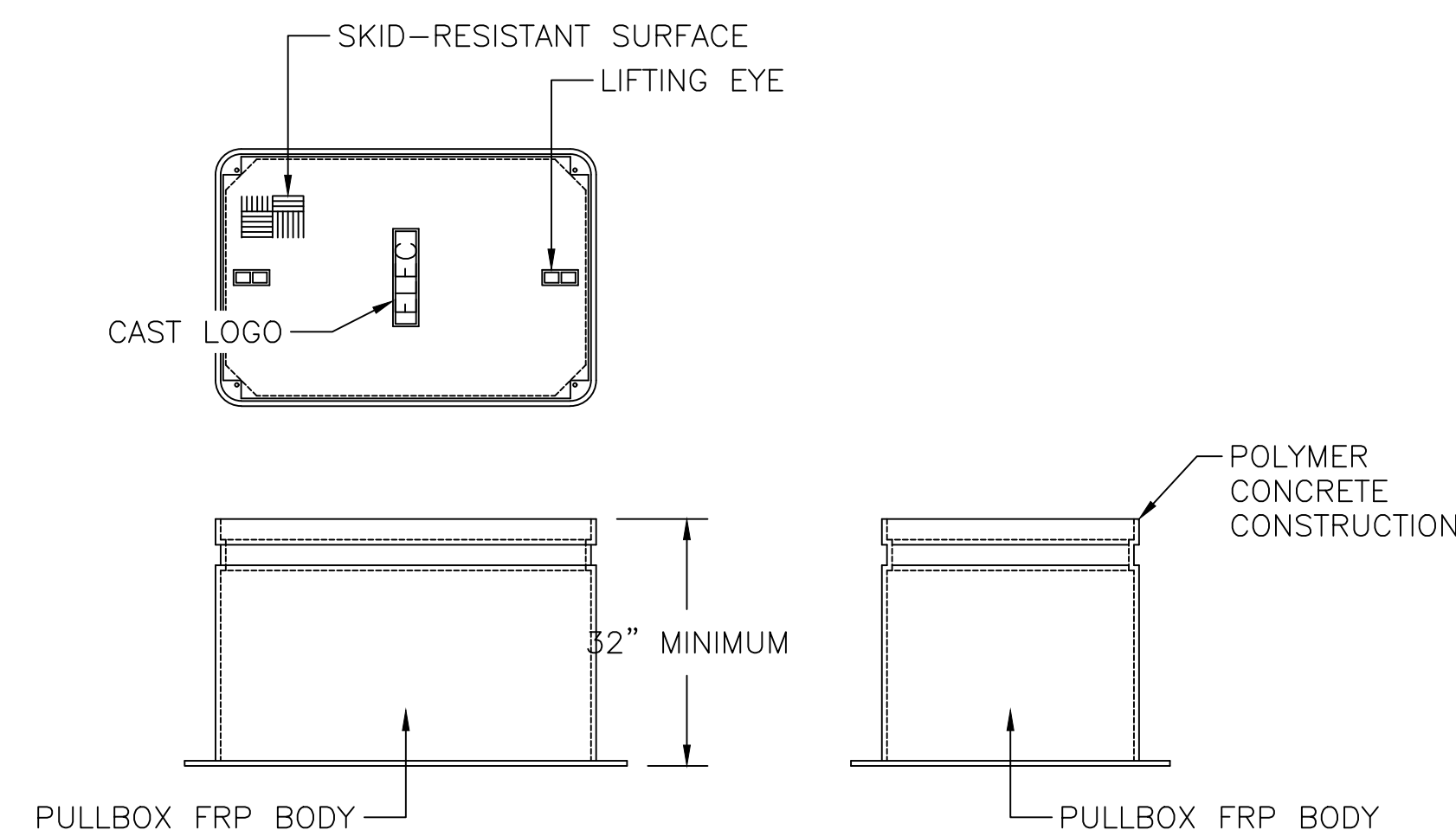
1
E-501
TYPICAL PANELBOARD ENCLOSURE AND SERVICE ENTRANCE CONDUIT
SCALE: NOT TO SCALE

NOTES

- CONTRACTOR SHALL PROVIDE SHOP DRAWINGS SHOWING EQUIPMENT LAYOUT AND CONFIGURATIONS PRIOR TO INSTALLATION. SHOP DRAWINGS SHALL INCLUDE ASSOCIATED DIMENSIONS OF ENCLOSURE AND ASSOCIATED EQUIPMENT TO BE INSTALLED WITHIN ENCLOSURE. CONTRACTOR SHALL ENSURE ALL ASSOCIATED EQUIPMENT IS ACCESSIBLE AND ABLE TO FIT WITHIN THE ASSOCIATED ENCLOSURE. ENCLOSURE SHALL BE NEMA 3R.
- CONTRACTOR SHALL INSTALL ALL EQUIPMENT PER MANUFACTURER'S INSTALLATION INSTRUCTIONS. ALL POWER AND CONTROLS SYSTEMS SHALL BE INSTALLED TO ENSURE A COMPLETE AND WORKING SYSTEM AT THE COMPLETION OF CONSTRUCTION.
- CONTRACTOR SHALL COORDINATE SERVICE INSTALLATION WITH PPL ELECTRIC UTILITY. CONTRACTOR SHALL PROVIDE ALL NECESSARY MATERIALS AND LABOR TO INSTALL THE ASSOCIATED NEW SERVICE. CONTRACTOR SHALL MEET ALL UTILITY AND NEC REQUIREMENTS.
- PROVIDE VAPORTIGHT LED LIGHT STRIP ON THE TOP INTERIOR OF ENCLOSURE. LIGHT FIXTURE SHALL BE INSTALLED TO ENSURE VISIBILITY OF THE EQUIPMENT WITHIN THE ENCLOSURE. CONTRACTOR SHALL PROVIDE SHOP DRAWINGS OF LED LIGHT STRIP FIXTURE.
- ALL ELECTRICAL COMPONENTS SHALL BE UL LISTED PER THE APPROPRIATE UL REQUIREMENTS.
- POWER PANEL TO BE SUPPLIED WITH (1) 3/4" X 10'-0" GROUND ROD. REFER TO PENNDOT STANDARD RC-84M AND NEC ARTICLE 250 FOR GROUNDING REQUIREMENTS.

COMPONENT LIST

- SINGLE PHASE, 100A PANELBOARD WITH LEVER BYPASS, LOAD CENTER, AND MCB. SEE PANEL SCHEDULE FOR SIZE OF MAIN AND NUMBER AND SIZE OF BRANCH BREAKERS. MOUNT INSIDE NEMA 3R ENCLOSURE.
- GALVANIZED STEEL CHANNEL STRUT SUPPORT TO EXTEND MIN. 42" IN GROUND BELOW CONCRETE EQUIPMENT PAD.
- BUILT-IN GFCI MAINTENANCE RECEPTACLE FLUSH MOUNTED IN PANEL.
- ON/OFF/AUTO SWITCH, CONNECT PHOTOCELL TO AUTO POSITION ON SWITCH.
- BUILT-IN, 8-POLE 30A, LIGHTING CONTACTOR, C1
- BUILT-IN, 4-POLE 30A, RECEPTACLE CONTACTOR, C2
- BUILT IN BUTTON TYPE PHOTOCELL FOR ON/OFF CONTROL OF STREETLIGHTING.



2
E-501
TYPICAL TIER 22 IN-GROUND PULLBOX CABLE - SIDE ENTRY/EXIT DETAIL
SCALE: NOT TO SCALE

NOTES

- PULLBOXES SHALL BE UL LISTED FOR BOTH POWER AND COMMUNICATION WIRING. PROVIDE SHOP DRAWINGS.
- PULLBOX COVER SHALL BE LOCKABLE.
- ALL PULLBOXES SHALL BE SIZED PER NEC ARTICLE 314 AND PENNDOT SPEC RC-82M. CONTRACTOR SHALL PROVIDE SHOP DRAWINGS, INCLUDING DIMENSIONS, PRIOR TO INSTALLATION.

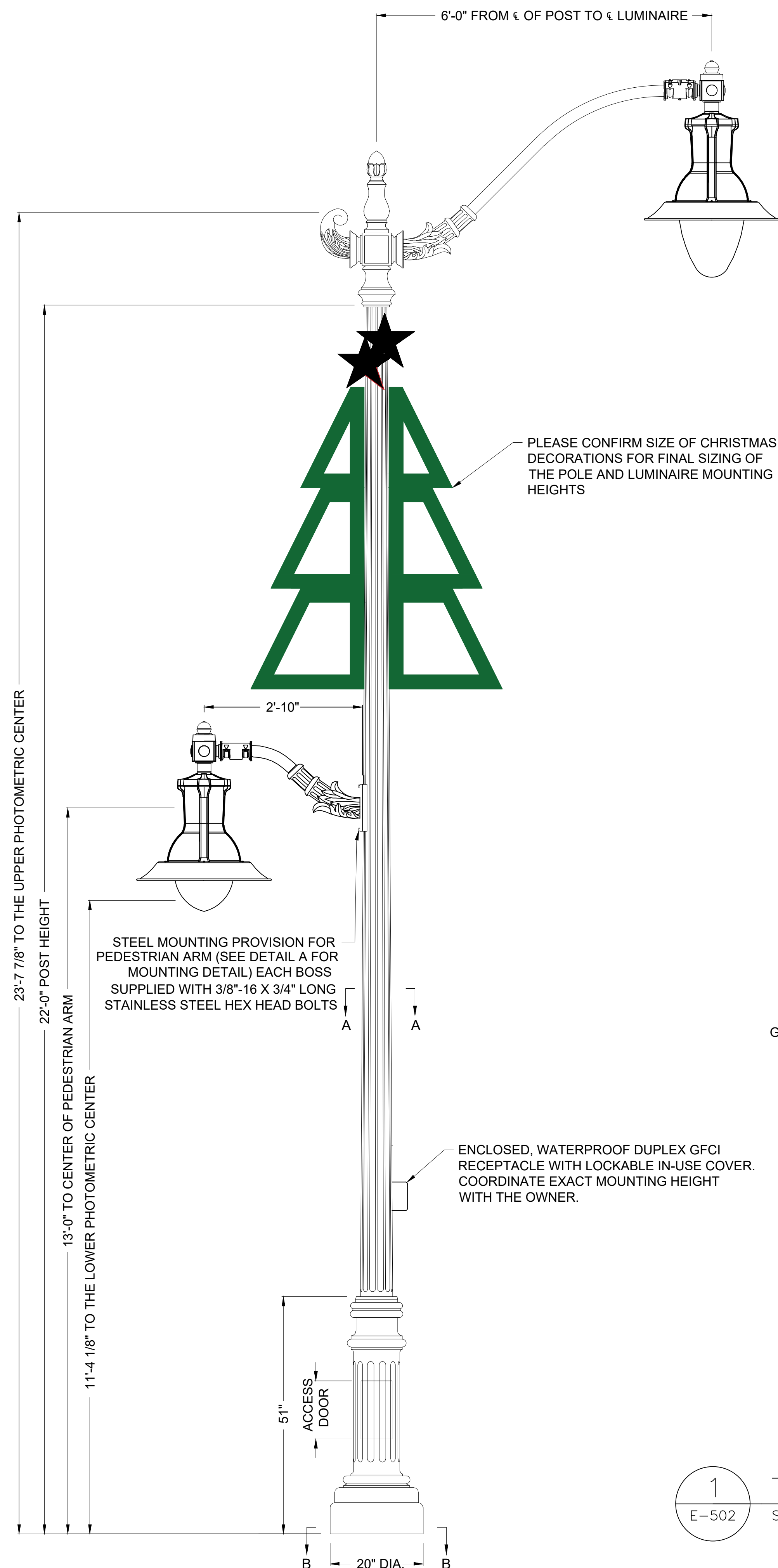
NOT FOR CONSTRUCTION



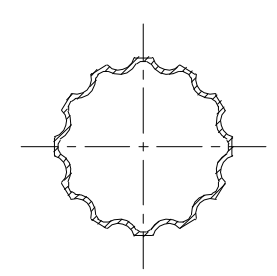
CALL BEFORE YOU DIG!
PA LAW REQUIRES 3 WORKING DAYS NOTICE FOR CONSTRUCTION PHASE BEFORE YOU DIG - DRILL-BLAST. CALL PA ONE CALL SYSTEM INC. AT 1-800-242-1776
SERIAL NO:
SEE COVER SHEET

DISTRICT	COUNTY	BOROUGH	ROUTE	SECTION	SHEET	
4-0	WAYNE	HONESDALE	0006	673	2 OF 34	
REVISION NUMBER	REVISIONS				DATE	BY

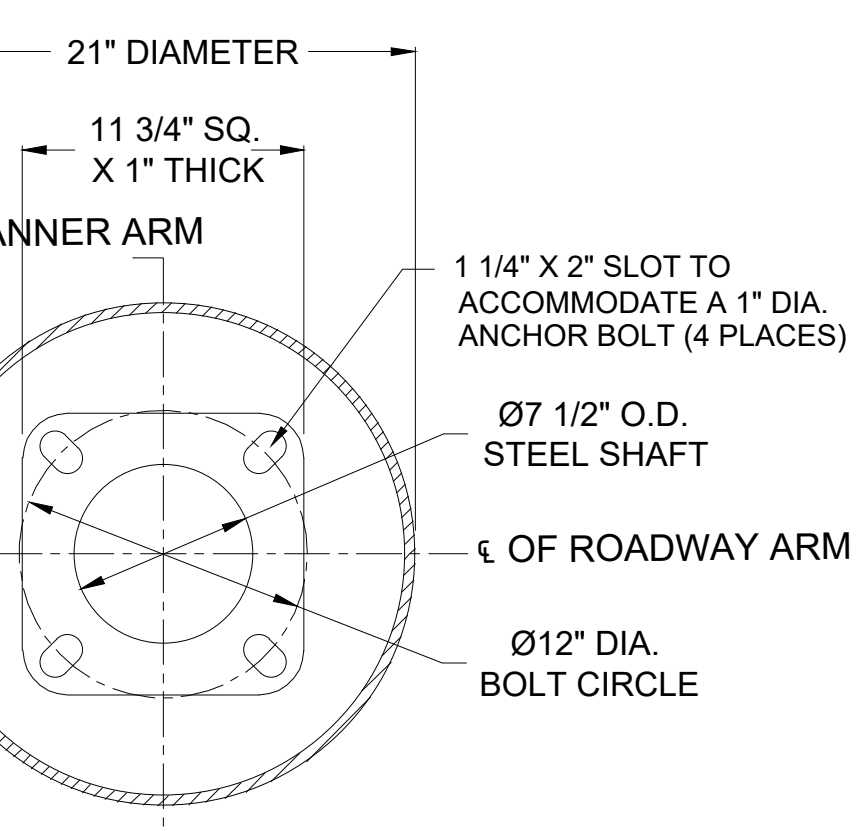
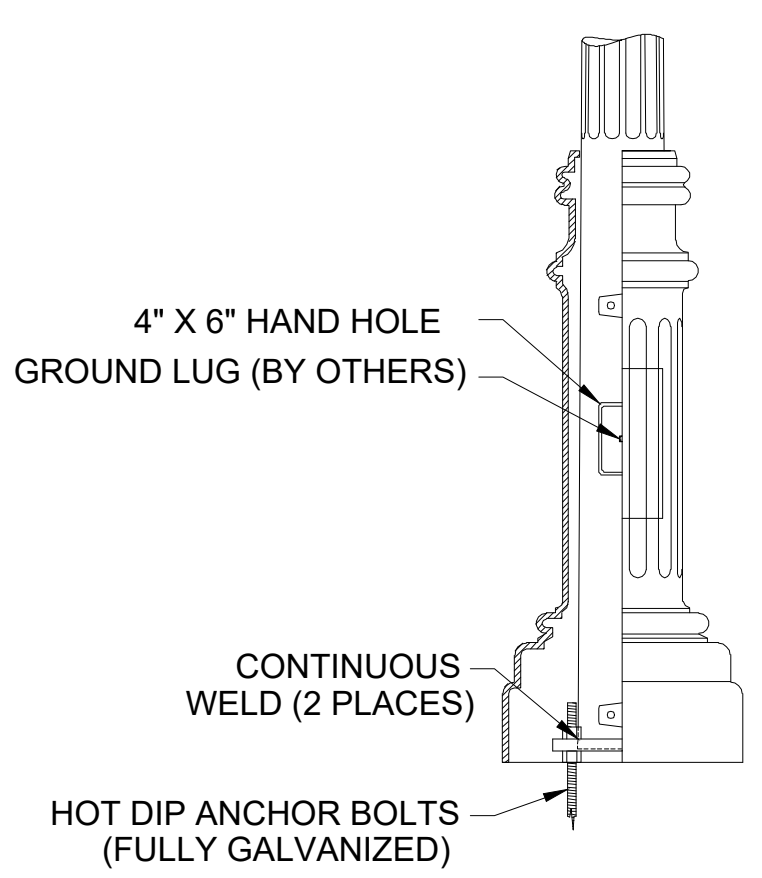
ECMS No. 121535



SIDE VIEW



SECTION A-A
7 GAUGE, 12 FLAT FLUTE STEEL
MONOTUBE CONSTRUCTION
N.T.S.



SECTION B-B
BASE PLATE DETAIL
N.T.S.

ROADWAY LUMINAIRE SPECIFICATIONS:

STYLE: COLUMBIA LED LUMINAIRE WITH 4" DEEP SHADE
 HEIGHT: 35 1/2"
 WIDTH: 29" DIAMETER
 MATERIAL: CAST ALUMINUM ALLOY A.N.S.I. 356, PER A.S.T.M. B26-95 WITH 12 GAUGE, 1100-0 SPUN ALUMINUM BODY
 PANEL: INTERNALLY RIBBED CLEAR 140 GLASS GLOBE
 FINISH: POWDER COATED - PLEASE ADVISE REQUIRED COLOR
 LAMPING: 30 WATT LED
 VOLTAGE: ELECTRONIC WIRED AT 120-277 VOLTS
 COLOR TEMP.: 3000K (WARM WHITE)
 OPTICAL SYSTEM: TYPE III CLEAR REFRACTIVE OPTICS (ASYMMETRIC DISTRIBUTION)
 SURGE: 10KV SURGE PROTECTION
 MODIFIER: 30" SPUN ALUMINUM SHADE (M6)
 COLUMBIA LUMINAIRE HOLDER (LACLB)
 CHARLEROI FINIAL (FCR)
 CATALOG NO.: ALMCLU-M10-LE030-EVX-2G2-30-CR3-GR14-LACLB-FCR-CU

PEDESTRIAN LUMINAIRE SPECIFICATIONS:

STYLE: COLUMBIA LED LUMINAIRE WITH 4" DEEP SHADE
 HEIGHT: 30"
 WIDTH: 29" DIAMETER
 MATERIAL: CAST ALUMINUM ALLOY A.N.S.I. 356, PER A.S.T.M. B26-95 WITH 12 GAUGE, 1100-0 SPUN ALUMINUM BODY
 PANEL: INTERNALLY RIBBED CLEAR 110 GLASS GLOBE
 FINISH: POWDER COATED - PLEASE ADVISE REQUIRED COLOR
 LAMPING: 20 WATT LED
 VOLTAGE: ELECTRONIC WIRED AT 120-277 VOLTS
 COLOR TEMP.: 3000K (WARM WHITE)
 OPTICAL SYSTEM: TYPE III CLEAR REFRACTIVE OPTICS (ASYMMETRIC DISTRIBUTION)
 SURGE: 10KV SURGE PROTECTION
 MODIFIER: 30" SPUN ALUMINUM SHADE (M6)
 COLUMBIA LUMINAIRE HOLDER (LACLB)
 CHARLEROI FINIAL (FCR)
 CATALOG NO.: ALMCLU-M10-LE020-EVX-2G2-30-CR3-GR10-LACLB-FCR-CU

ROADWAY ARM SPECIFICATIONS:

STYLE: NORTHAMPTON "SINGLE" ARM
 HEIGHT: 46 1/8"
 WIDTH: 6'-0" FROM ϵ OF POST TO ϵ OF LUMINAIRE
 MATERIAL: SCHEDULE 40 ALUMINUM PIPE WITH CAST ALUMINUM ALLOY ANSI 356 PER A.S.T.M. B26-95
 FINISH: POWDER COAT - PLEASE ADVISE REQUIRED COLOR
 TENON: 2 3/8" DIA. X 6" LONG (TO ACCEPT LUMINAIRE HOLDER)
 CATALOG NO.: AARNT-1S-72-42-TN2.38-6.00-CU

PEDESTRIAN ARM SPECIFICATIONS:

STYLE: NORTHAMPTON SIDE MOUNT
 WIDTH: 2'-10" FROM BACK OF PLATE TO ϵ OF LUMINAIRE
 HEIGHT: 1'-0"
 MATERIAL: 2" SCH-40 ALUMINUM PIPE WITH CAST ALUMINUM ORNAMENTATION
 FINISH: POWDER COAT - PLEASE ADVISE REQUIRED COLOR
 TENON: 2 3/8" DIA. X 6 1/4" LONG (TO ACCEPT LUMINAIRE ADAPTOR)
 CATALOG NO.: AWKNRT-1S-34-12-TN2.38/6.25-CB

LAMP POST SPECIFICATIONS

STYLE: HANCOCK STEEL
 HEIGHT: 22'-0"
 PHOTOMETRIC CENTER:
 - UPPER: 23'-7 7/8"
 - LOWER: 11'-4 1/8"
 BASE: 20" DIAMETER
 MATERIAL:
 - SHAFT: 7 GAUGE, 12 FLAT FLUTE STEEL MONOTUBE CONSTRUCTION
 - BASE: TWO PIECE (WRAP AROUND), CAST DUCTILE IRON PER A536-84 GRADE 65-45-12
 FINISH: POWDER COAT - PLEASE ADVISE REQUIRED COLOR
 ACCESS DOOR: LOCATED IN BASE TO COINCIDE WITH HAND HOLE IN STEEL SHAFT SECURED WITH TAMPER PROOF HEX SOCKET SECURITY MACHINE SCREWS
 GROUND PROVISIONS: 1/4"-20 SQUARE NUT WELDED TO INSIDE WALL OF SHAFT OPPOSITE HAND HOLE TO ACCOMMODATE GROUND STUD (STUD BY OTHERS)
 ANCHOR BOLTS: (4) 1" DIA. X 36" LONG + 4" HOOK (FULLY GALVANIZED WITH 2 GALVANIZED NUTS AND 2 GALVANIZED WASHERS PER BOLT)
 BOLT PROJECTION: 5" REQUIRED
 TENON: NOT REQUIRED (POLE CAP TO USE TOP OF SHAFT AS TENON)
 MODIFIERS:
 - PEDESTRIAN ARM MOUNTING PROVISION (SD)
 CATALOG NO.:
 - BASE: DWBHCN-20-CB
 - SHAFT: SSH2F-G17-07.50-22.00-4BP-SD-FH-CU
 - ANCHOR BOLT: 136/2NW

1 TYPICAL LIGHT POLE DETAIL
E-502 SCALE: NOT TO SCALE

NOT FOR CONSTRUCTION



CALL BEFORE YOU DIG!
 PA LAW REQUIRES 3 WORKING DAYS
 NOTICE FOR CONSTRUCTION PHASE
 BEFORE YOU DIG - DRILL-BLAST,
 CALL PA ONE CALL SYSTEM INC.
 AT 1-800-242-1776
 SERIAL NO:
 SEE COVER SHEET

THE LIMIT OF PROFESSIONAL LIABILITY FOR THIS PROJECT SHALL BE LIMITED TO AN AMOUNT EQUAL TO THE FEE PAID FOR ALL WORK PERFORMED BY WOODLAND DESIGN ASSOCIATES, INC.
 © 2025 WOODLAND DESIGN ASSOCIATES, INC.
 ALL RIGHTS RESERVED, INCLUDING REPRODUCTION AND USE

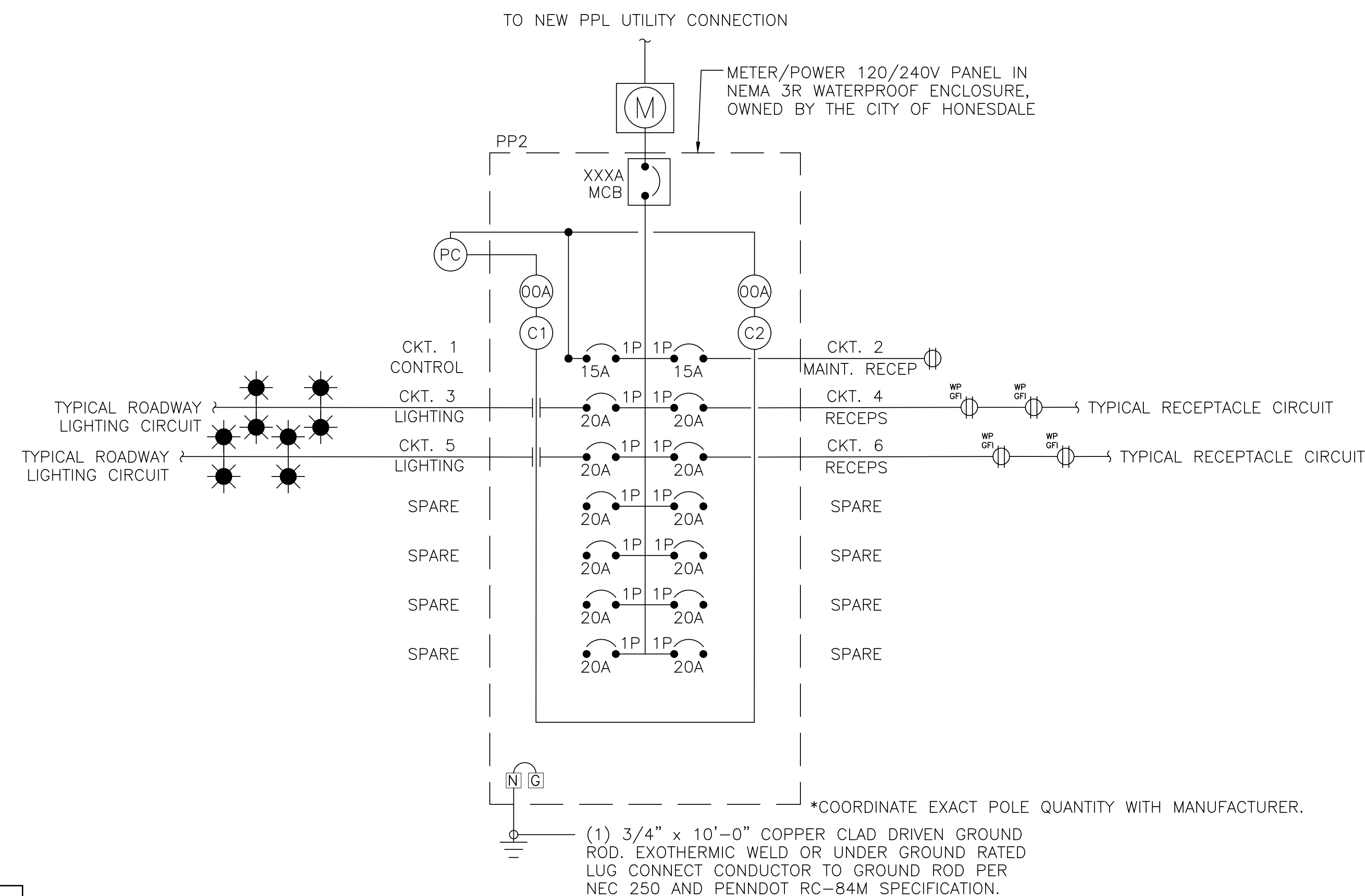
DISTRICT	COUNTY	BOROUGH	ROUTE	SECTION	SHEET	
4-0	WAYNE	HONESDALE	0006	673	2 OF 34	
REVISION NUMBER	REVISIONS				DATE	BY

ECMS No. 121535

NOTES

- LIGHTING CIRCUITS TO BE CONTROLLED VIA PHOTOCELL.
- REFER TO RC-84M OF PUB72M, PENNDOT HIGHWAY LIGHTING - LIGHTING AND ELECTRICAL DETAILS FOR ADDITIONAL WIRING DETAILS.
- SEE LIGHTING NEW WORK PLAN SHEETS (E-100-E-102) FOR CIRCUITING.
- ALL LIGHTING CONTROL CENTERS AND ELECTRICAL EQUIPMENT SHALL BE PROVIDED WITH "ARC-FLASH WARNING" LABELS PER THE NATIONAL ELECTRIC CODE NEC 110.16 AND NFPA 70E, AND ALL OTHER LABELS REQUIRED BY NFPA 70.
- ALL CALCULATIONS ASSUME LED TYPE HOLIDAY LIGHTING WILL BE USED, AT A MAXIMUM OF 200W PER POLE.

WIRING SCHEDULE	
SYMBOL/EQUIPMENT	WIRING DESCRIPTION
<p>DWG: XX-XX LP-## PP2-##</p>	<p>#10 AWG CU RHH/RHW/USE 600V CONDUCTORS WITH 1-#10 AWG CU 600V CONDUCTOR (GREEN) GROUND. UNLESS NOTED.</p> <p>INDICATES DRAWING NUMBER</p> <p>INDICATES LIGHT POLE NUMBER</p> <p>INDICATES PANEL AND CIRCUIT NUMBER</p>
	<p>HANDHOLE BOX DESIGNATION</p> <p>HANDHOLE BOXES SIZE PER NEC 314 PROVIDE WEIGHT RATING OF BOX PER LOCATION</p>
	<p>CIRCUIT BREAKER</p>



1 ONE-LINE DIAGRAM
E-600 SCALE: NO SCALE

PANELBOARD SCHEDULE															
DESIGNATION:		BUS: 100A			VOLTAGE: 240 / 120 V 1φ 3W				LOCATION: AS SPECIFIED ON PLAN SHEETS						
PP2		MAIN: 100A MCB			INTERRUPTING RATING: MEET OR EXCEED UTILITY SERVICE				FED BY: UTILITY						
		ENCLOSURE: NEMA 3R			MOUNTING: SURFACE										
CKT NO	POLE	TRIP	WIRE	G	LOAD	KVA ~ A	KVA ~ B	LOAD	G	WIRE	TRIP	POLE	CKT NO		
1	1	15	8	8	LIGHTING CONTROL	XXX	XXX	MAINTENANCE RECEP	12	12	15	1	2		
3	1	20	8	8	STREETLIGHTING	---	---	RECEPTACLES	8	8	20	1	4		
5	1	20	8	8	STREETLIGHTING	XXX	XXX	RECEPTACLES	8	8	20	1	6		
7	1	20	-	-	SPARE	---	---	SPARE	-	-	20	1	8		
9	1	20	-	-	SPARE	0.00	0.00	SPARE	-	-	20	1	10		
11	1	20	-	-	SPARE	---	---	SPARE	-	-	20	1	12		
13	1	20	-	-	SPARE	0.00	0.00	SPARE	-	-	20	1	14		
CONNECTED KVA PER PHASE						0.00	0.00								
TOTAL CONNECTED KVA						0.00		TOTAL CONNECTED AMPERES						0.00	

THE LIMIT OF PROFESSIONAL LIABILITY FOR THIS PROJECT SHALL BE LIMITED TO AN AMOUNT EQUAL TO THE FEE PAID FOR ALL WORK PERFORMED BY WOODLAND DESIGN ASSOCIATES, INC.
© 2025 WOODLAND DESIGN ASSOCIATES INC
ALL RIGHTS RESERVED, INCLUDING REPRODUCTION AND USE

NOT FOR CONSTRUCTION



CALL BEFORE YOU DIG!
PA LAW REQUIRES 3 WORKING DAYS NOTICE FOR CONSTRUCTION PHASE BEFORE YOU DIG - DRILL-BLAST. CALL PA ONE CALL SYSTEM INC. AT 1-800-242-1776
SERIAL NO:
SEE COVER SHEET